

## Upcoming Projects

Ashapura Buildcon Limited is now coming with new project in Mumbai, Bengaluru and extending its horizons.

Uchiyada Palace & Resort	Uchiyada, Jodhpur
Ashapura Residential Apartment	Yelahanka, near RMZ Galleria, Bengaluru
Ashapura Icon	Ratanada, Jodhpur
Ashapura Sports City	Jodhpur (Spread across 300 Acres)
Vista Suites	Jhalamand, Jodhpur
Ashapura NRI Estates	Bhakrasni, Jodhpur (Spread across 100 Acres)
Ashapura Farmlands	Ujaliya, Jodhpur
Royal Park Lands	Mogra, Jodhpur (Spread across 80 Acres)
Ashapura's London Eye	Lal Sagar Mandore, Jodhpur
Ashapura Township	Ajmer Road, Jaipur
Ashapura Palace	Jodhpur
Ashapura Heritage	Jodhpur Phase III & IV
Ashapura's Resort	Pushkar
Ashapura Hotel	Ajit Bhawan, Jodhpur
Ashapura Mall & Multiplex	Mansarovar, Jaipur
Ashapura Enclave Studios	Jodhpur
Ashapura Township Pachpadra	Sambhra Village on Balotra Road
Ashapura Neelkamal Mall	Bhayander, Mumbai



Corporate Office:  
**Ashapura Buildcon Limited**  
Opp. LIC Office, Circuit House Road, Ratanada,  
Jodhpur - 342 001  
Phone: 0291-2513747, 2514747  
Email: marketing@ashapura.com  
www.ashapura.com

Visit Us At:



Site Office:  
**Ashapura Neopolis**  
Mahapura, Ajmer Road, Jaipur (Raj.)

RERA No. RAJ/P/2025/4726  
RERA Website: www.rera.rajasthan.gov.in

9057 747 747



47<sup>th</sup> Project  
  
ASHAPURNA  
**NEOPOLIS**

Timeless Luxury, Inspired by Greece

Mahapura, Ajmer Road, Jaipur

“*Creating spaces that  
nurture love & laughter*”

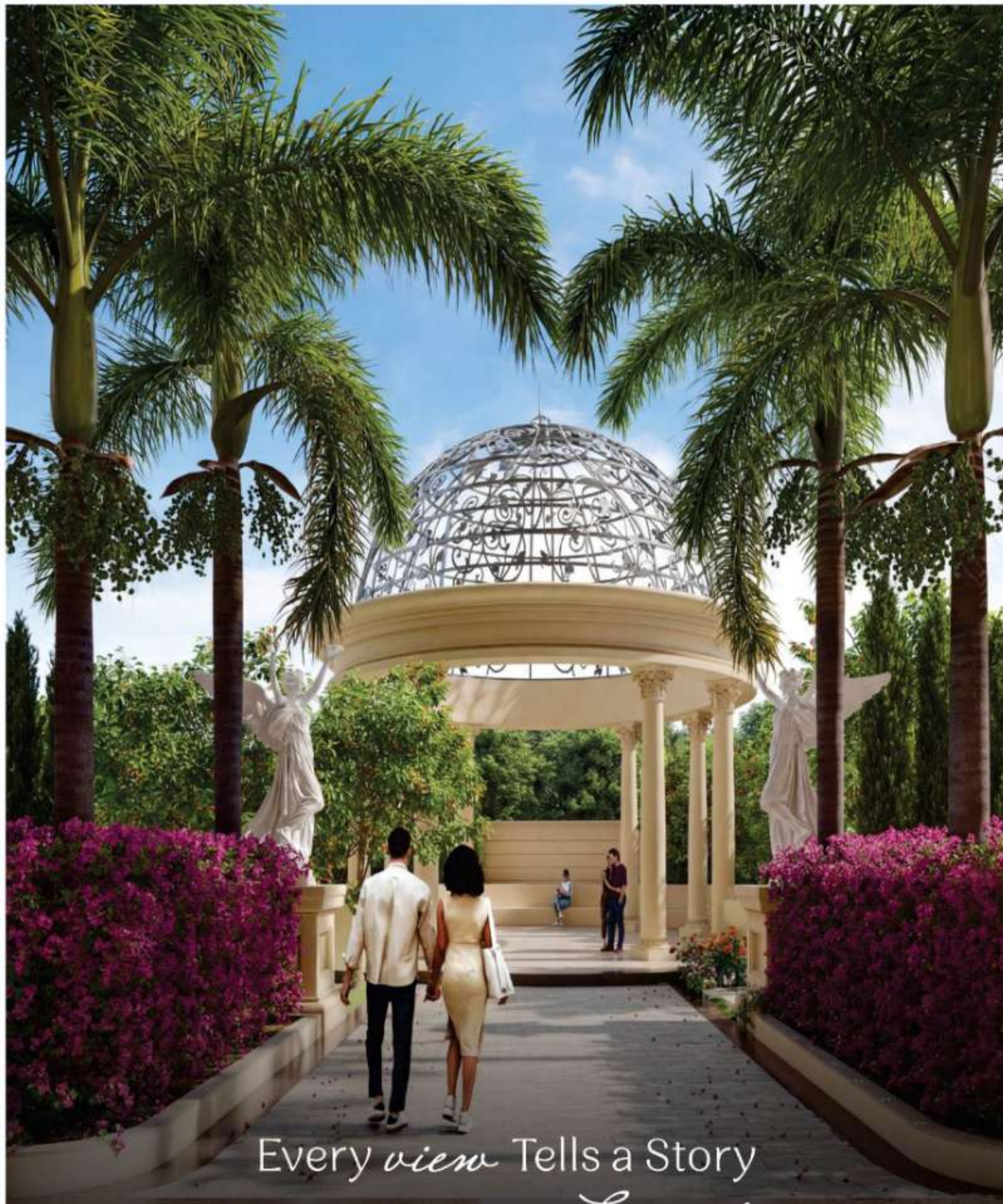




## Greek-Themed Living, First Time in *Jaipur*

Ashapura Neopolis sets a new benchmark in Jaipur with ultra-luxury high-rise living in an expansive 11-acre gated township, delivering an extraordinary lifestyle defined by spacious interiors, breathtaking views, and openness at every level.





Every *view* Tells a Story  
 Every Day Feels *Limitless*

From sunrise to sunset, every corner of Ashapura Neopolis opens to breathtaking views and lush greenery. Expansive windows, terraces, and thoughtfully designed layouts ensure that residents feel connected to nature, light, and open skies. Here, every glance inspires calm, every moment invites freedom, and daily living feels boundless and uplifting.



## Luxury Living, Beyond *homes*

**75%**  
 Open Area

**80,000**sq.ft.  
 Outdoor Sports & Amenities

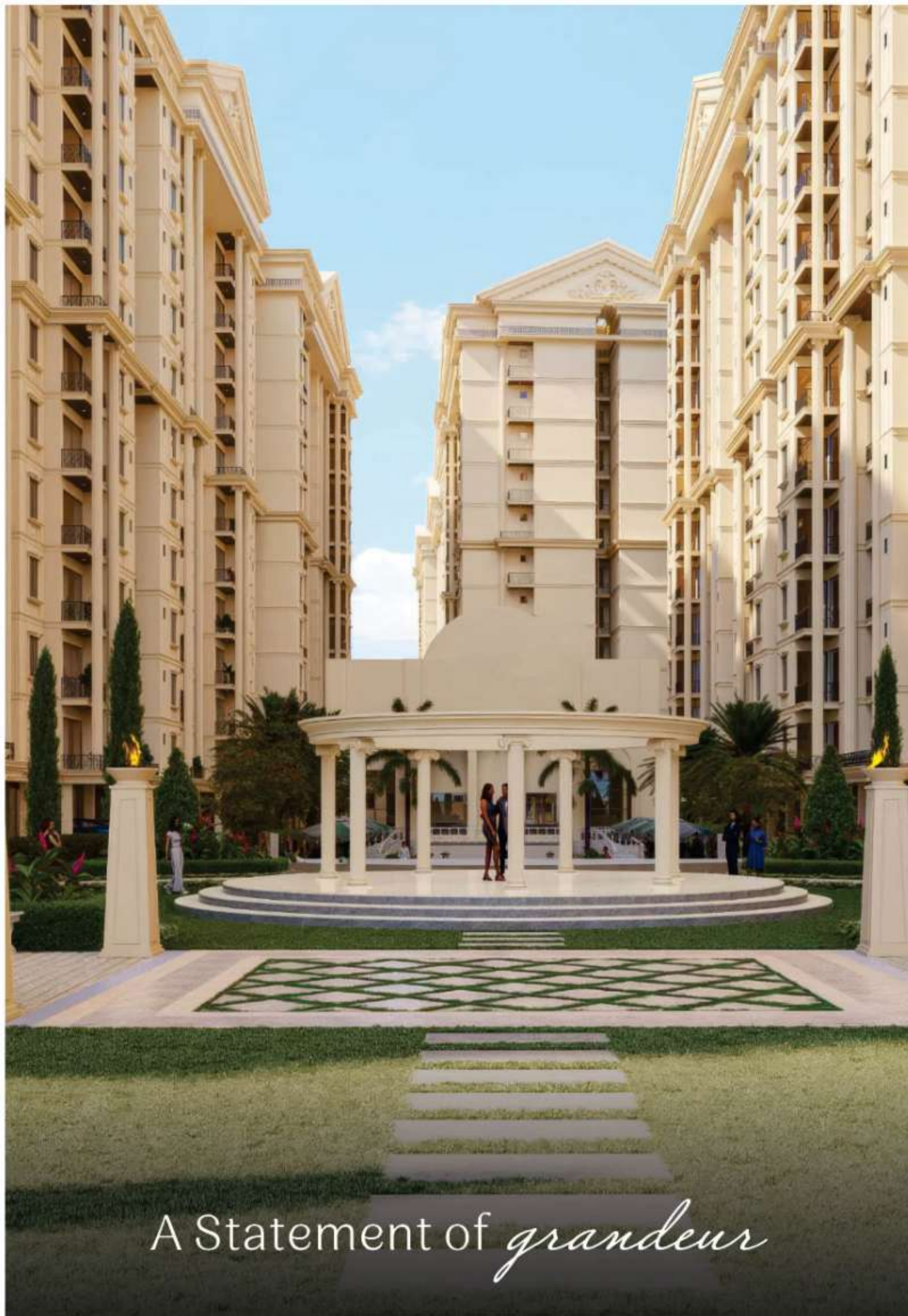
**7,800**sq.ft.  
 Banquet Hall

**22,000**sq.ft.  
 5-Star Clubhouse





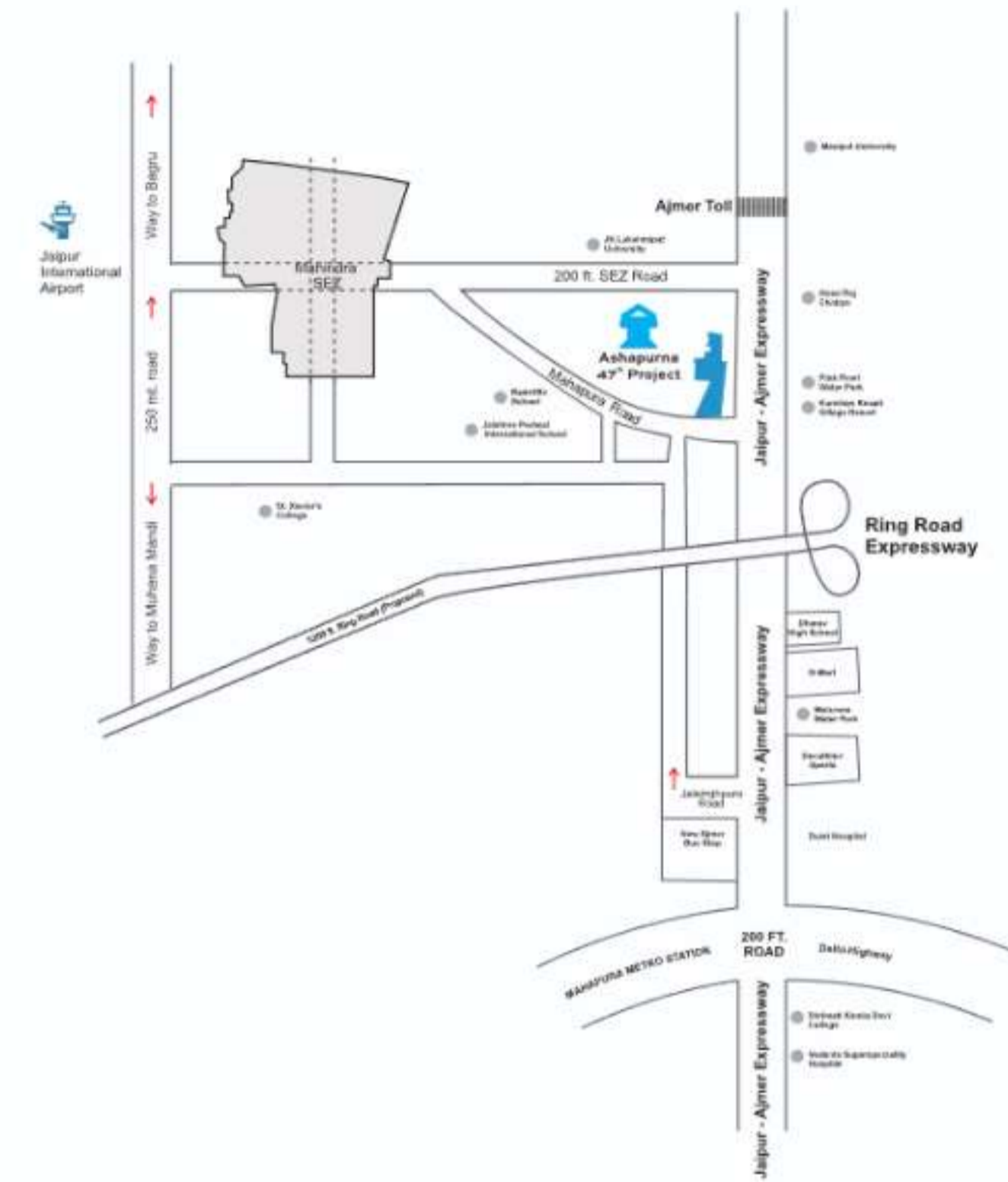
— Closer to nature, Closer to *heart*



A Statement of *grandeur*

## Key Distances:

-  **Business Hub**  
 Mahindra SEZ - 2 Mins.
-  **Education Institutions**  
 Dharav High School - 2 Mins.  
 Manipal University - 20 Mins.
-  **Road Connectivity**  
 Ring Road Expressway - 1 Min.  
 Ajmer Toll - 5 Mins.  
 200 Ft. Road - 15 Mins.
-  **Mall & Multiplex**  
 D-Mart - 2 Mins.  
 Decathlon Sports - 5 Mins.
-  **Hotel**  
 Hyatt Regency - 1 Min.
-  **Public Transport**  
 Ajmer Road Bus Stand - 10 Mins.  
 Mansarovar Metro Station - 10 Mins.  
 International Airport - 20 Mins.
-  **Hospital**  
 Vedanta Superspeciality Hospital - 20 Mins.  
 Dulet Hospital - 10 Mins.



Scan QR Code for Location



Minutes  
from it *all*

Nestled on the Mahapura, Ajmer Road, Jaipur, Ashapurna Neopolis offers seamless connectivity across the city. Educational Institutions, Business hubs, Retail centers, and Healthcare facilities are just minutes away, while the calm, green surroundings provide a peaceful retreat from the city bustle.



Temple



Gazebo



A serene & calm escape surrounded by *greenery*



# Lavish Greek themed *residences*



## Spacious 3, 3.5 & 4 BHK Residences with Larger Windows & Balconies

Experience ultra-luxury living with a Greek-inspired design and expansive layouts, crafted for comfort and grandeur.

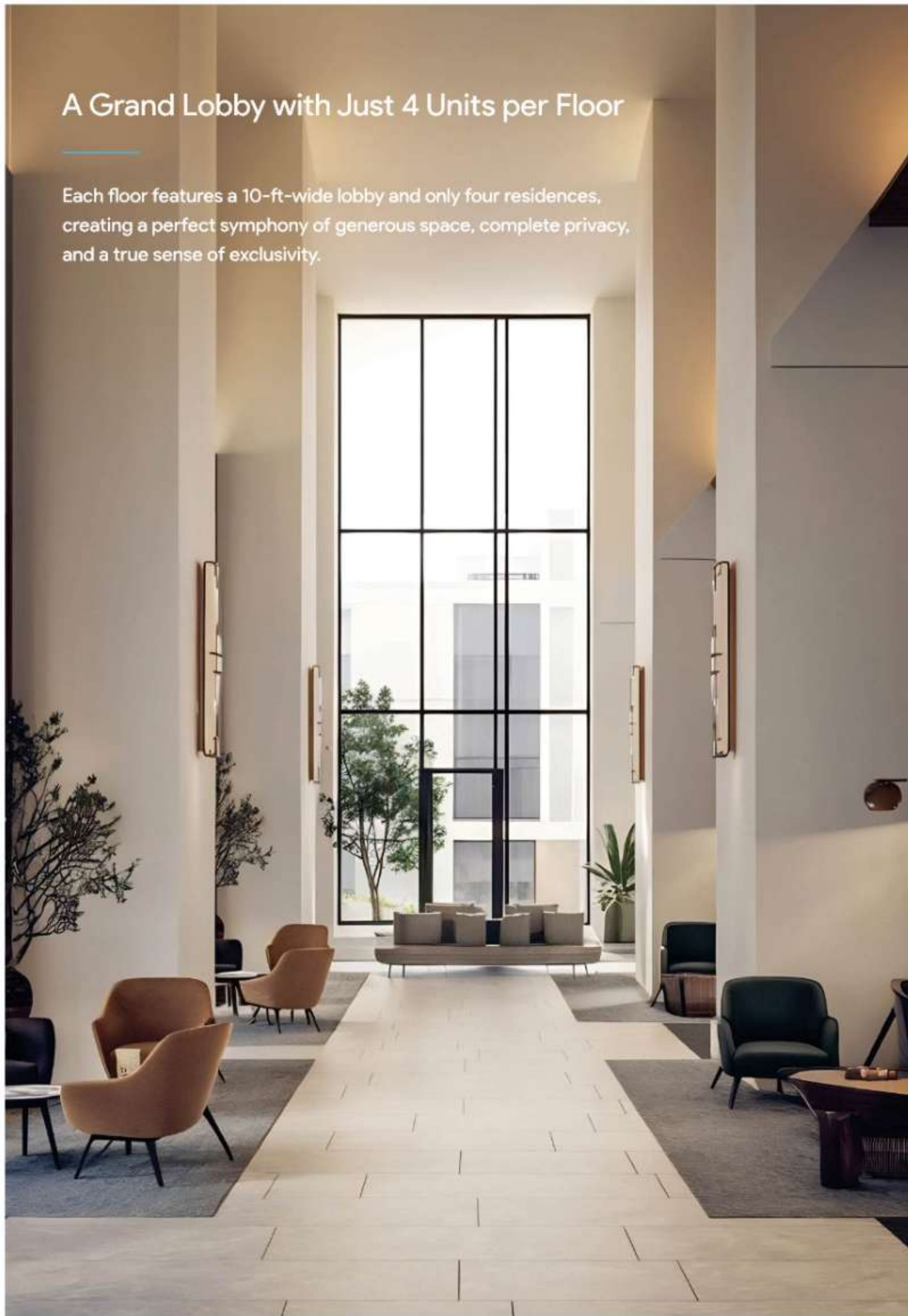
## Homes with 11-Foot Floor-to-Ceiling Height

Soaring 11-foot ceilings span the entire apartment, filling every space with natural light and gentle ventilation, and creating an expansive ambience that reflects the pinnacle of luxury living.



## A Grand Lobby with Just 4 Units per Floor

Each floor features a 10-ft-wide lobby and only four residences, creating a perfect symphony of generous space, complete privacy, and a true sense of exclusivity.



## Privacy at *the core*



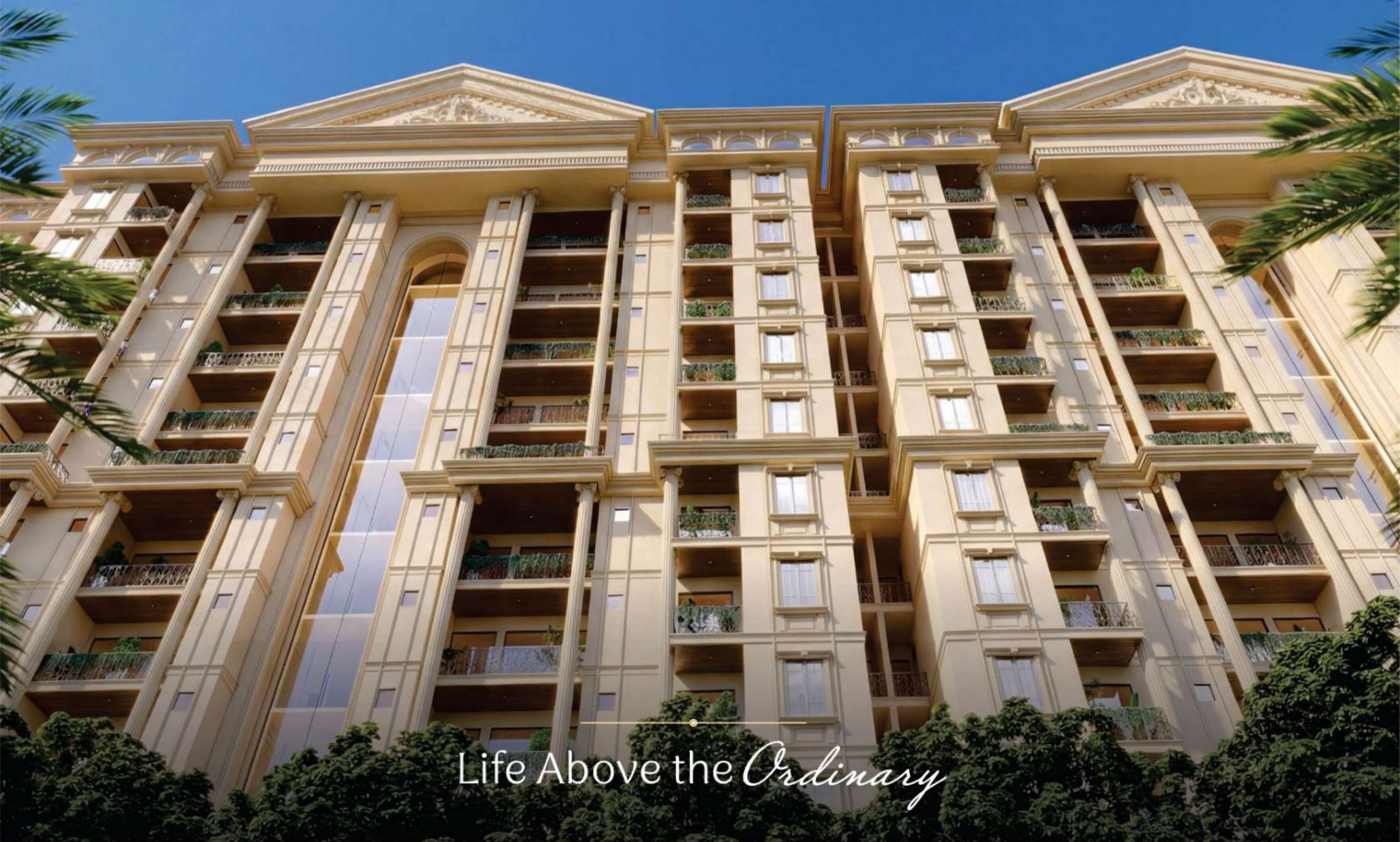
## No Units Facing Each Other, only Open Green Views



Privacy is central to every space and design. Homes are planned so no units face each other, ensuring uninterrupted views of green landscapes. Balconies and windows open exclusively to peaceful green spaces, allowing residents to enjoy complete privacy while staying surrounded by nature.



*A Landmark*  
of Luxury and Space



Life Above the *Ordinary*



# Master Plan

Total Land Area : 11 Acres | No. of Floors : G+11 | Commercial : G+1

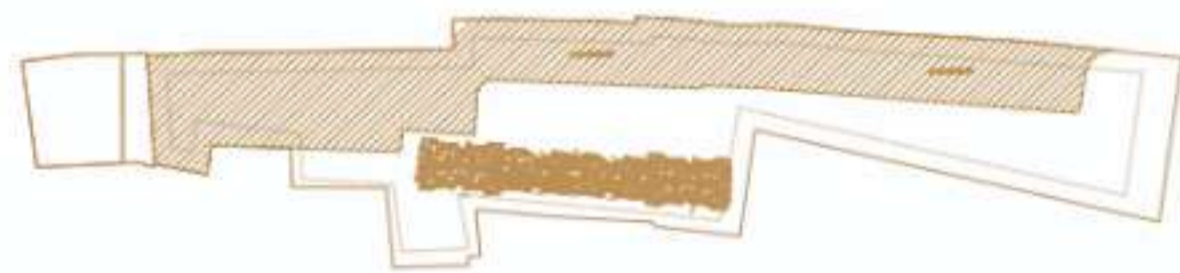
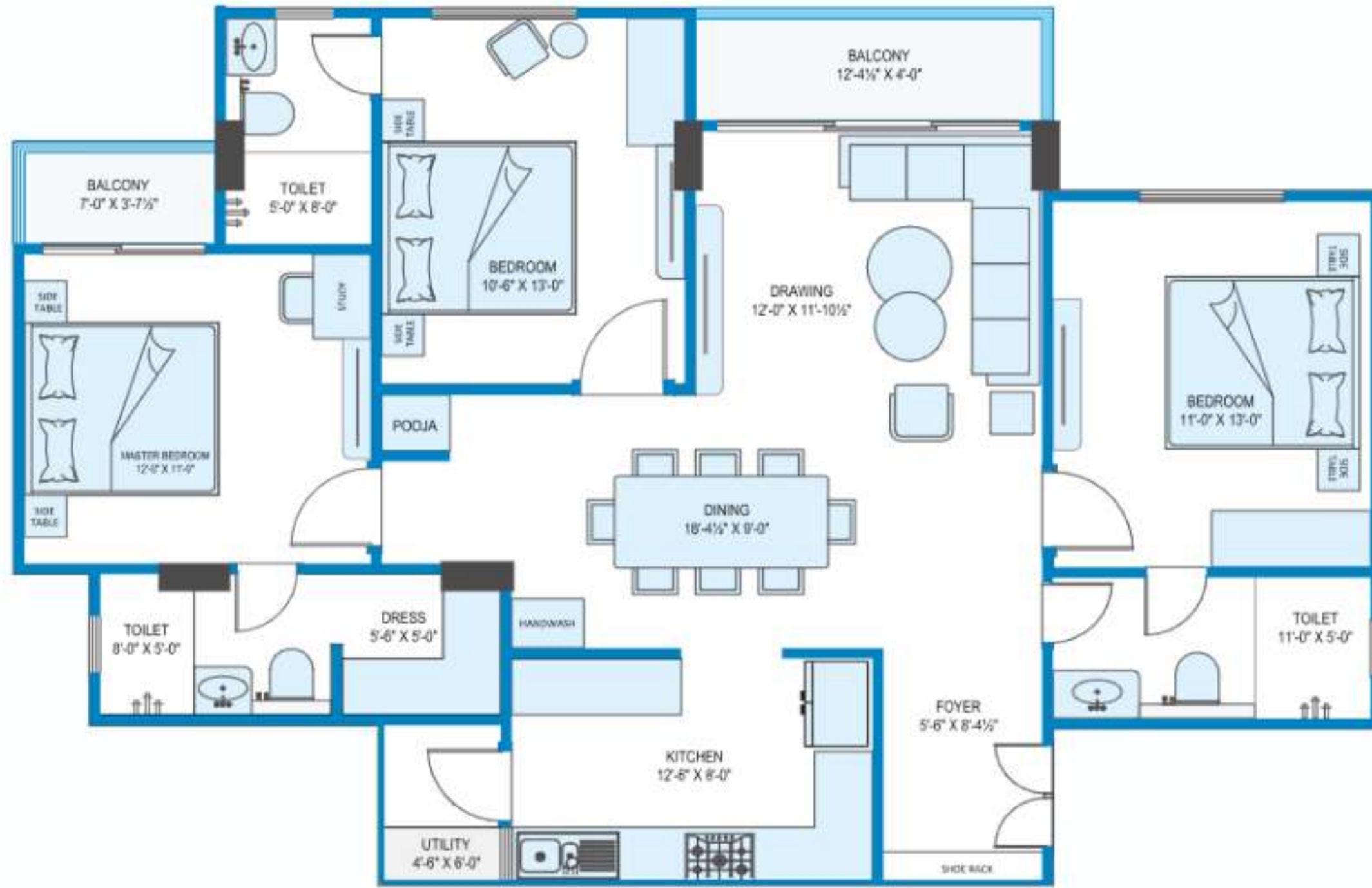
## Exclusive Amenities

- |  |                                |                                  |                       |
|--|--------------------------------|----------------------------------|-----------------------|
| 1. Approach road                           | 11. Banquet service lawn       | 21. Swimming pool with kids pool | 31. Pickleball courts |
| 2. Residential entry portal                | 12. Feature wall               | 22. Temple entry                 | 32. Box cricket nets  |
| 3. Commercial Parking                      | 13. Banquet lawn               | 23. Temple lawn                  | 33. Skating rink      |
| 4. Driveway                                | 14. Pavilion                   | 24. Feature greenscape           | 34. Open gymnasium    |
| 5. Commercial block                        | 15. Meditation lawn            | 25. Central water feature        | 35. Commercial entry  |
| 6. Arrival junction                        | 16. Seating gazebo             | 26. Temple                       | 36. Exit portal       |
| 7. Lawn                                    | 17. Ramps to and from basement | 27. Kids play area               |                       |
| 8. Driveway junctions with accent flooring | 18. Feature plaza              | 28. Sand pit                     |                       |
| 9. Banquet arrival plaza                   | 19. Entry to club house        | 29. Stepped seating for courts   |                       |
| 10. Banquet hall                           | 20. Pool deck                  | 30. Basketball court             |                       |



# Asteri

3 BHK layout plan



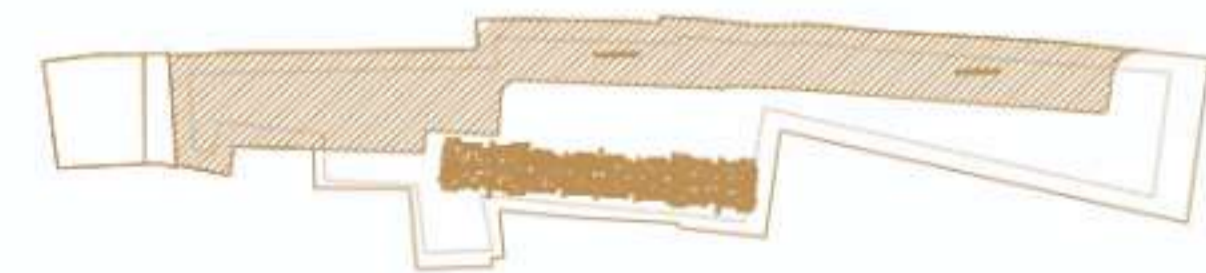
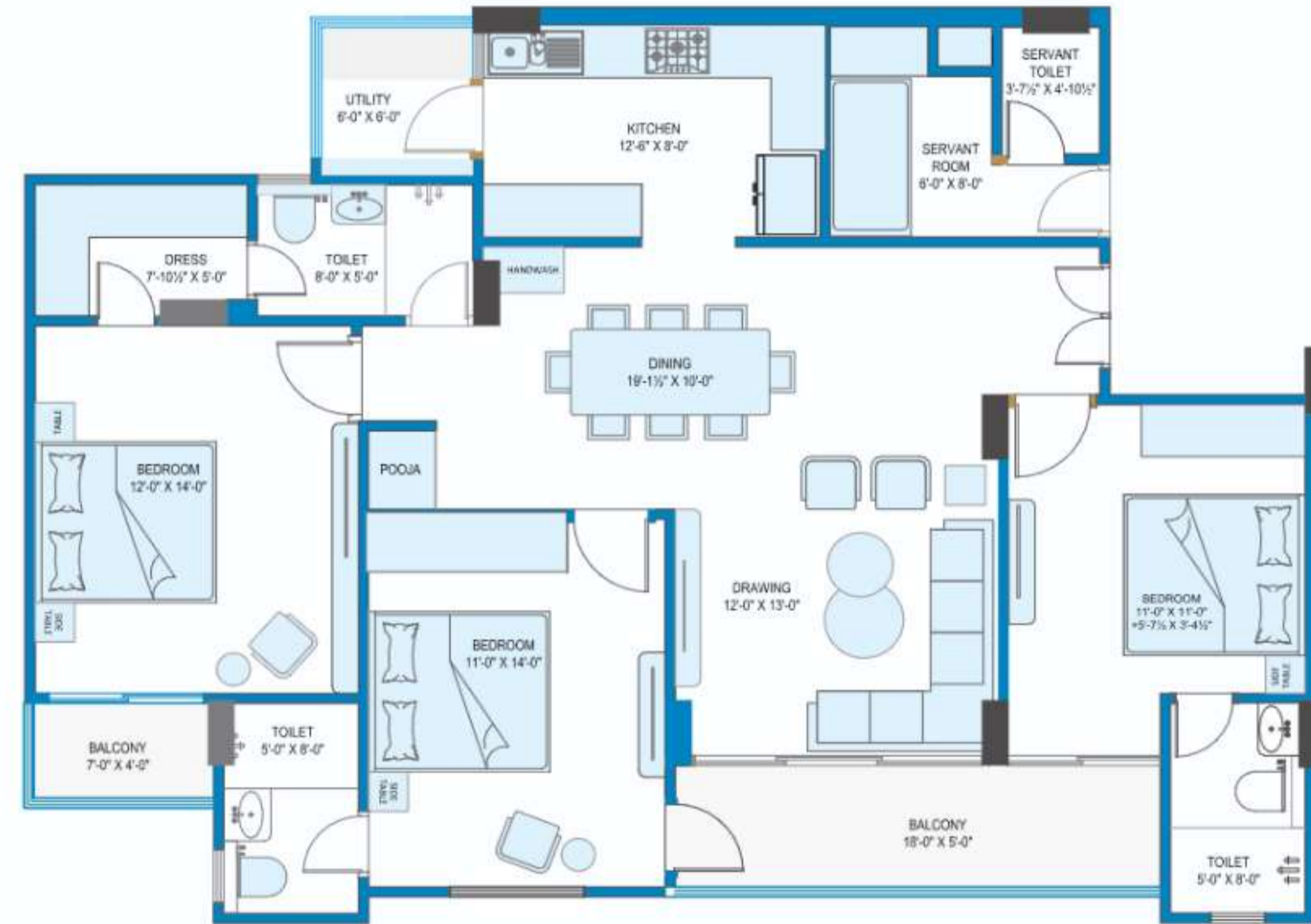
Super Built Up Area

( 3 BHK + 3T ) - 1661 Sq.Ft.



# Selene

3.5 BHK layout plan



Super Built Up Area

( 3.5 BHK + 4T ) - 1920 Sq.Ft.



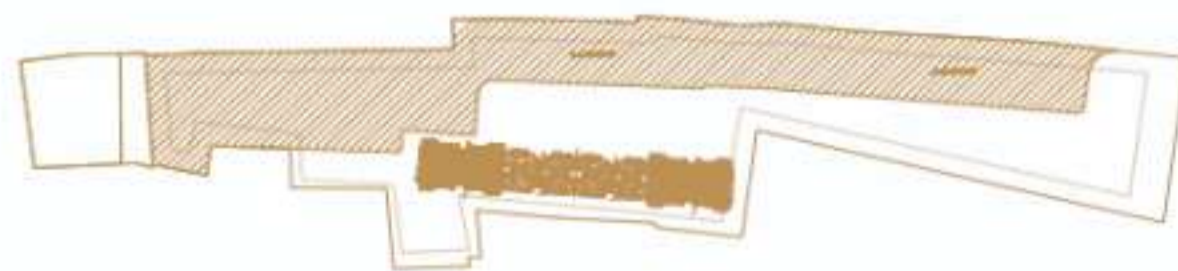
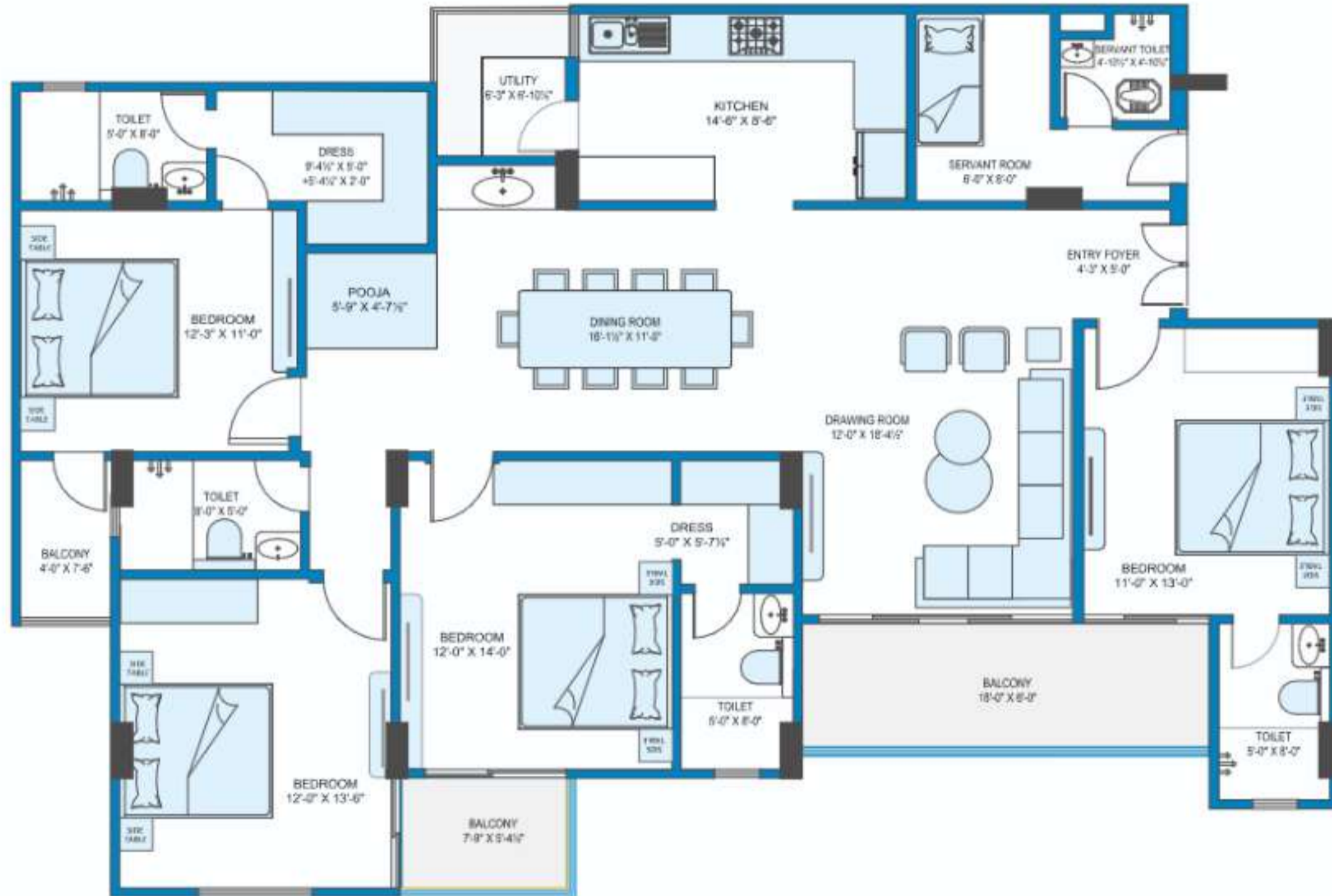
# Helios

4 BHK layout plan



Everyday *luxury,*  
beautifully lived

Arched entrances, premium flooring, and tall windows come together in Vastu-aligned layouts to create a luxurious, light-filled ambiance with refined modern detailing.



Super Built Up Area

( 4 BHK + 4T ) - 2638 Sq.Ft.



Entrance Area



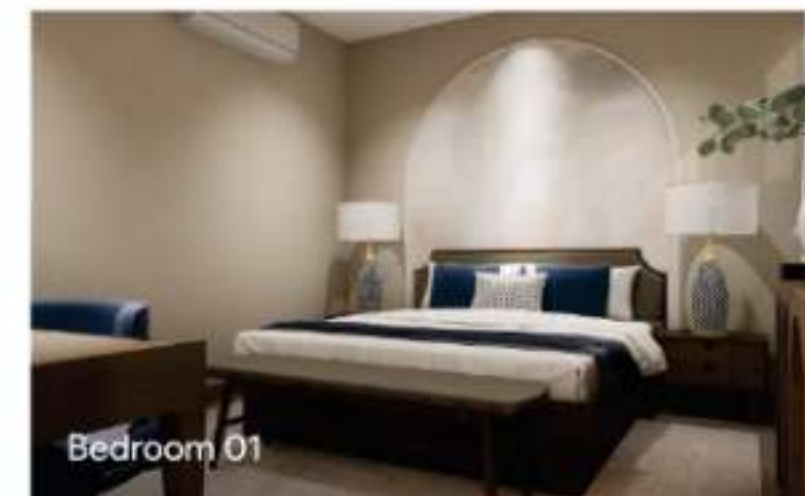
Dining Area



Temple



Living Room



Bedroom 01



Bedroom 02



Club Neopolis

A World of *leisure*



### Club Neopolis Spread Over 22,000 sq. ft.

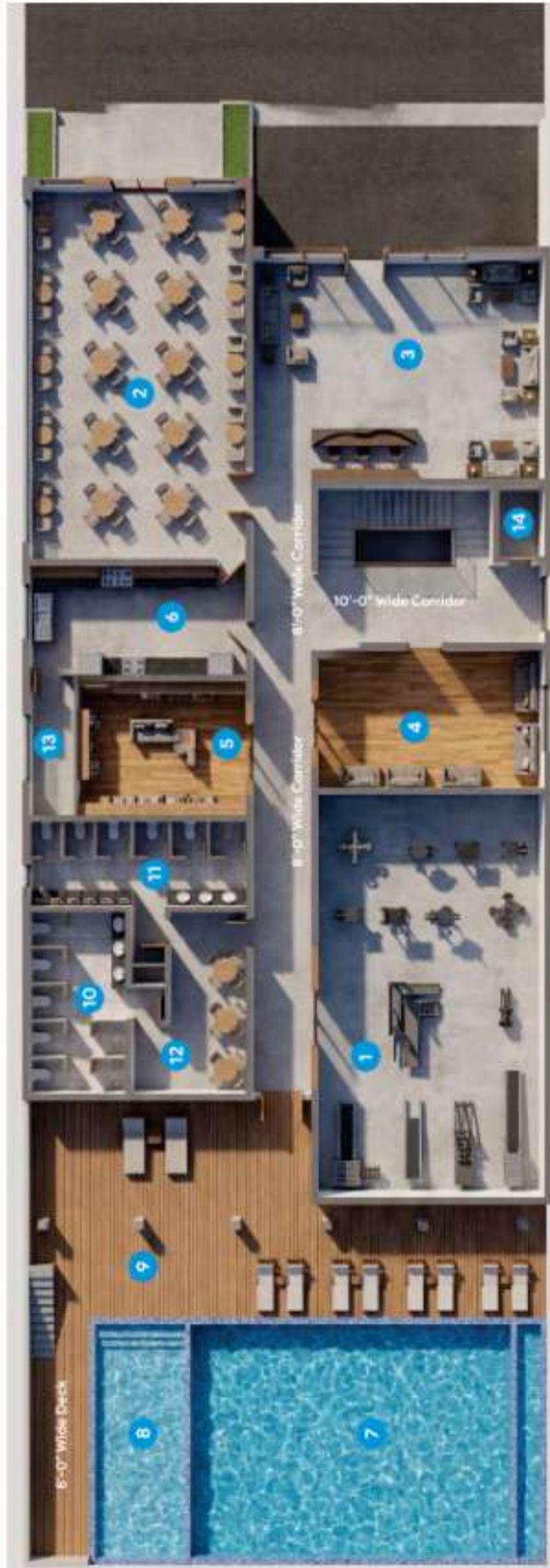
A crafted lifestyle destination designed to bring together leisure, wellness, recreation, and community living under one grand roof.

The clubhouse offers every possible modern amenity, curated to complement the ultra-luxurious character of Ashapura Neopolis.



# The Clubhouse of *ultimate luxury*

## Ground Floor Plan



### Signature Amenities

1. Indoor Kids Play Area / Creche
2. Cafeteria / Hall
3. Double Height Reception Lobby
4. Music / Art / Dance Hobby Studio
5. Library
6. Kitchen
7. Swimming Pool
8. Kids Pool
9. Deck with Poolside Seating & Recliners
10. Female Toilet
11. Male Toilet
12. Family Wet Seating
13. Store Room
14. Elevator

## First Floor Plan



## Second Floor Plan



### Signature Amenities

- |  |                        |                      |                     |
|--|------------------------|----------------------|---------------------|
| 1. Fitness Centre                        | 9. Steam Room (Female) | 1. Mini Home Theatre | 9. Housekeeper Room |
| 2. Indoor Games Area                     | 10. Sauna (Female)     | 2. Party Hall        | 10. Store           |
| 3. Arcade Games Area                     | 11. Steam Room (Male)  | 3. Guest Room 1      | 11. Toilet (Unisex) |
| 4. Open Terrace (Main)                   | 12. Sauna (Male)       | 4. Guest Room 2      | 12. Elevator        |
| 5. Zumba / Stretching / Workshop Terrace | 13. Manager / Lobby    | 5. Guest Room 3      | 13. Open Terrace    |
| 6. Jacuzzi / Hydro Therapy Pool          | 14. Female Toilet      | 6. Guest Room 4      |                     |
| 7. Therapy Room 1                        | 15. Male Toilet        | 7. Guest Room 5      |                     |
| 8. Therapy Room 2                        | 16. Elevator           | 8. Pantry            |                     |

# Outdoor Amenities



Basketball Court



Lawn Tennis



Mini Box Cricket



Football & Volleyball Court



Skating Rink



Open Gym Area



## Spaces *that* Kids Love & Enjoy

Toddlers Sand Play Area

Kids Pool

Modern Kids Play Equipments

Kids Themed Obstacle Course





# Banquet Hall

Crafted for *grand celebrations*





# Spaces *that* shape an active lifestyle

A well-planned mix of sports and fitness amenities encourages movement, strength and overall well-being. Designed to support active routines, these spaces make fitness an effortless part of everyday life.



## Indoor Amenities



Banquet Hall



Pickleball Court



Badminton Court (2)



Squash Court



Indoor Games Area



Music & Zumba Room



Library



Cafeteria



Sauna & Steam Room



# Spaces *that* Refresh and Rejuvenate

The pool and leisure areas offer a calm retreat for relaxation & refreshment. Thoughtfully designed for peaceful moments and soothing escapes, these spaces bring harmony and balance to everyday living.





# A well-planned Commercial Destination

Dedicated showroom and retail spaces with high visibility and easy access. Located within the township, serving residents and nearby neighborhoods for steady business opportunities.



## Green choices, Better futures

Gas Pipeline



Sustainable Materials



Garbage Collection Point

LED Lighting



Natural Ventilation



EV Charging Point

Green Landscapes



Waste Segregation



Water-Saving Fixtures



Ashapura Neopolis reflects a commitment to living well, today and tomorrow. Every element is planned to respect nature while upholding the highest standards of comfort and quality.

# 7-Tier security

Complete Protection. Absolute Safety.



## 24X7 Manned Security

Trained security personnel stationed at all key entry and exit points.



## App-Based Access Control

Seamless entry management through smart, app-enabled security systems.



## CCTV Surveillance

Strategically placed cameras monitoring common areas and perimeters at all times.



## Access-Controlled Amenities

Exclusive access to amenities, ensuring only residents and authorized users enter.



## Boom Barriers

Controlled vehicular access at entrances.



## Emergency Response System

Rapid assistance for emergencies such as fire outbreaks or urgent safety situations.



## Smart Door Locks

Enhanced home security with advanced locking systems for controlled access.

# Dedicated maintenance for complete *peace of mind*



A thoughtfully managed township where everyday care continues well beyond possession—so residents can live comfortably without daily concerns.

## WHAT YOU CAN COUNT ON



### Professional Upkeep

Common areas & shared spaces are maintained through planned and regular care.



### Landscapes & Open Areas

Green spaces, walkways, and outdoor zones are kept clean, organised, and inviting.



### Routine Repairs & Monitoring

Preventive checks and timely repairs help avoid disruptions and ensure smooth living.



### Security & Surveillance

Controlled access, surveillance systems, & regular monitoring help maintain a secure & orderly township.

## TRUST THAT CONTINUES

Thoughtfully maintained. Peacefully lived.



Unwavering protection for you and your family, every single day.

# Project *Specifications*

## Rooms

Flooring	Vitrified tiles (600 x 1200)
Wall Finishes	Cement plaster with high-quality acrylic emulsion paint
Ceiling	Acrylic emulsion paint
Electrical	Legrand switches and sockets with concealed ISI-approved copper wiring in PVC conduits
Air-Conditioning	Provision for split AC with copper piping and electrical point
TV / Telephone / Internet	TV and telephone points with intercom facility and fiber optics provision for high-speed internet

## Kitchen

Flooring	Vitrified tiles (600 x 1200)
Wall Finishes	Cement plaster with high-quality acrylic emulsion paint
Ceiling	Acrylic emulsion paint
Platform	Full body tile
Sink	Double-bowl stainless steel
Gas Pipeline	Centralized piped LPG system
Electrical Points	Provision for chimney, RO system, refrigerator and water purifier

## Balcony

Railing	Mild Steel (MS) railing
---------	-------------------------

## Toilets

Flooring	Ceramic tiles (2'x2')
Wall Finishes	Cement plaster with ceramic tiles (2'x4')
CP & Sanitary Fittings	Kohler
Wash Basin	Kohler
Utility Point	Provision for washing machine point with inlet and outlet
Exhaust Point	Fan point in all bathrooms

## Doors & Windows

Door Frames	Bijolia Stone
Doors	Laminated flush doors with night latch, magic eye and stylish handle
Windows & Balcony Doors	Aluminium powder-coated

## Staircase

Tread & Riser	Natural stone
Handrail	Mild Steel (MS) railing

## Painting

Internal & External	High-quality acrylic emulsion paint
---------------------	-------------------------------------

## Structure & Services

Structure Type	RCC framed structure designed as per seismic zone requirements and latest BIS codes to ensure safety and durability
Energy-Efficient Design	Energy-efficient, green and eco-friendly design
Wiring	All wiring concealed in PVC conduits with ISI-approved copper wiring

## Common Services

Power Backup	1000-watt power backup for common areas
Lifts	Two high-speed automatic lifts with generator backup in each block
DTH & Broadband	Connectivity provision available
EV Charging	Electrical point provided



# About Us

Established in 1996, Ashapurna became a household name in Rajasthan within a very short span of time. Ashapurna became the first ISO 9001:2000 certified company in Western Rajasthan in 2004.

 **45+** projects
  **29 years** of legacy
  **30,000** happy residents
  **4+** crores sq. ft. of spaces delivered

Under the phenomenal leadership of Mr. Karan Singh Uchiyarda & Mr. Harshvardhan Singh Uchiyarda, Ashapurna Buildcon has spread its wings across top Residential projects, Hospitality, Education, Commercial and Entertainment domains in Rajasthan.

## WE ARE HONOURED TO BE RECOGNIZED AS



**Best Real Estate Developer of the Year**



**Best Realty Brand of the Year**

<b>1997</b>	<b>1999</b>	<b>2001</b>	<b>2004</b>	<b>2005</b>
• Ashapurna Township, Uchiyarda	• Ashapurna Township, Jalore	• Ashapurna Township, Sanchore	• Ashapurna Nagar	• Ashapurna City
<b>2006</b>	<b>2007</b>	<b>2008</b>	<b>2009</b>	<b>2010</b>
• Ashapurna Township, Pali • Ashapurna Valley	• Ashapurna Mall & Multiplex • Ashapurna Township, Sheoganj	• Ashapurna Commercial • Ashapurna Tower	• Mohan Villas • Maa Bhagwati Nagar	• Ashapurna Greens • Ashapurna Enclave
<b>2011</b>	<b>2012</b>	<b>2013</b>	<b>2014</b>	<b>2015</b>
• Ashapurna Nanomax	• Ashapurna Empire • Ashapurna Paradise	• Ashapurna Chandan Vihar • Ashapurna Nano Grand • Ashapurna Platinum • Ashapurna Hotel, Jaipur	• Ashapurna Crown Plaza • Ashapurna Golden Valley • Ashapurna Buddha • Group of Institutions, Udaipur	• Ashapurna Heritage • Ashapurna Nano Avenue • Ashapurna Windmill & Solar Plant, Jaisalmer
<b>2016</b>	<b>2017</b>	<b>2018</b>	<b>2019</b>	<b>2020</b>
• Ashapurna Nano Regiment	• Ashapurna Basera	• Ashapurna Basera II	• Ashapurna Nano Plaza	• Ashapurna Anmol • Ashapurna Aangan
<b>2021</b>	<b>2022</b>	<b>2023</b>	<b>2024</b>	<b>2025</b>
• Ashapurna Aangan Prime • Ashapurna NRI	• Ashapurna Pachpadra	• Ashapurna Mohanbagh • Ashapurna NRI 2	• Ashapurna Valley Orchard	• Ashapurna Agri Park • Ashapurna NRI Vistara

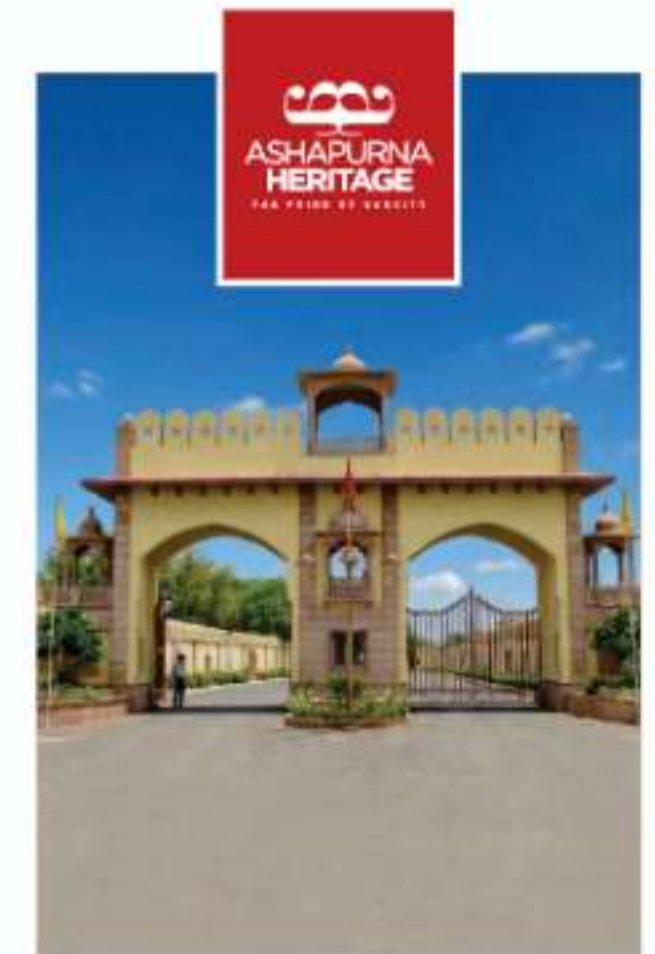
## Current Offerings



**ASHAPURNA MOHANBAGH**  
( Near ITC Hotel, Uchiyarda, Jodhpur )



**ASHAPURNA NRI**  
( Main Jodhpur-Pali Highway, Rajasthan )



**ASHAPURNA HERITAGE**  
( Basni Banda, Airport Road, Jodhpur )