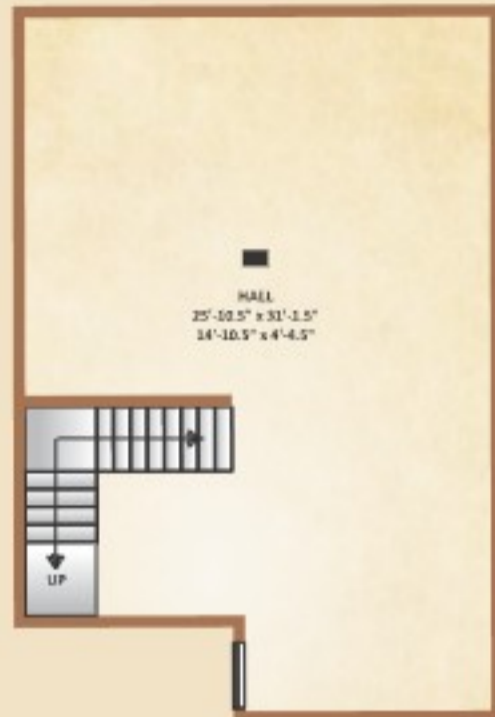


Floor Plan



Arcadia greens Luxury Bungalows...

Basement Floor



Ground Floor



First Floor



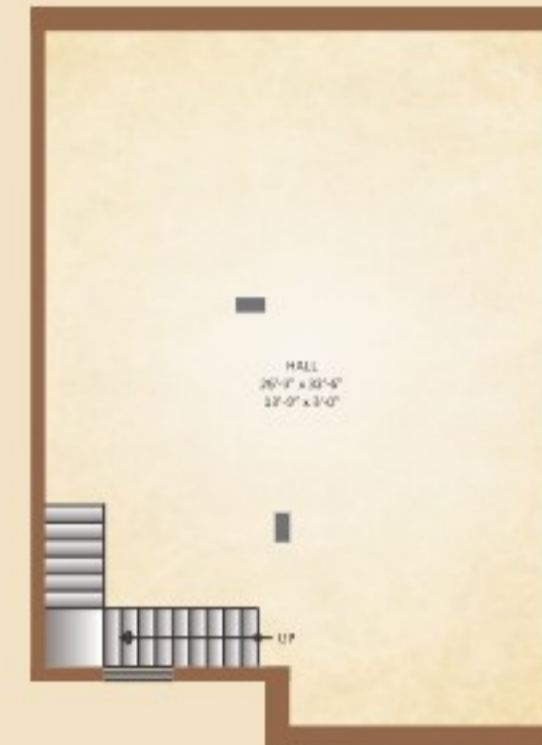
Terrace Floor



Floor Plan

Arcadia greens Luxury Bungalows...

Basement Floor



Ground Floor



First Floor



Bungalow Type - A

West Facing : 165 sq.yds. (27x55) | Built-up Area : 4000 sq.ft.

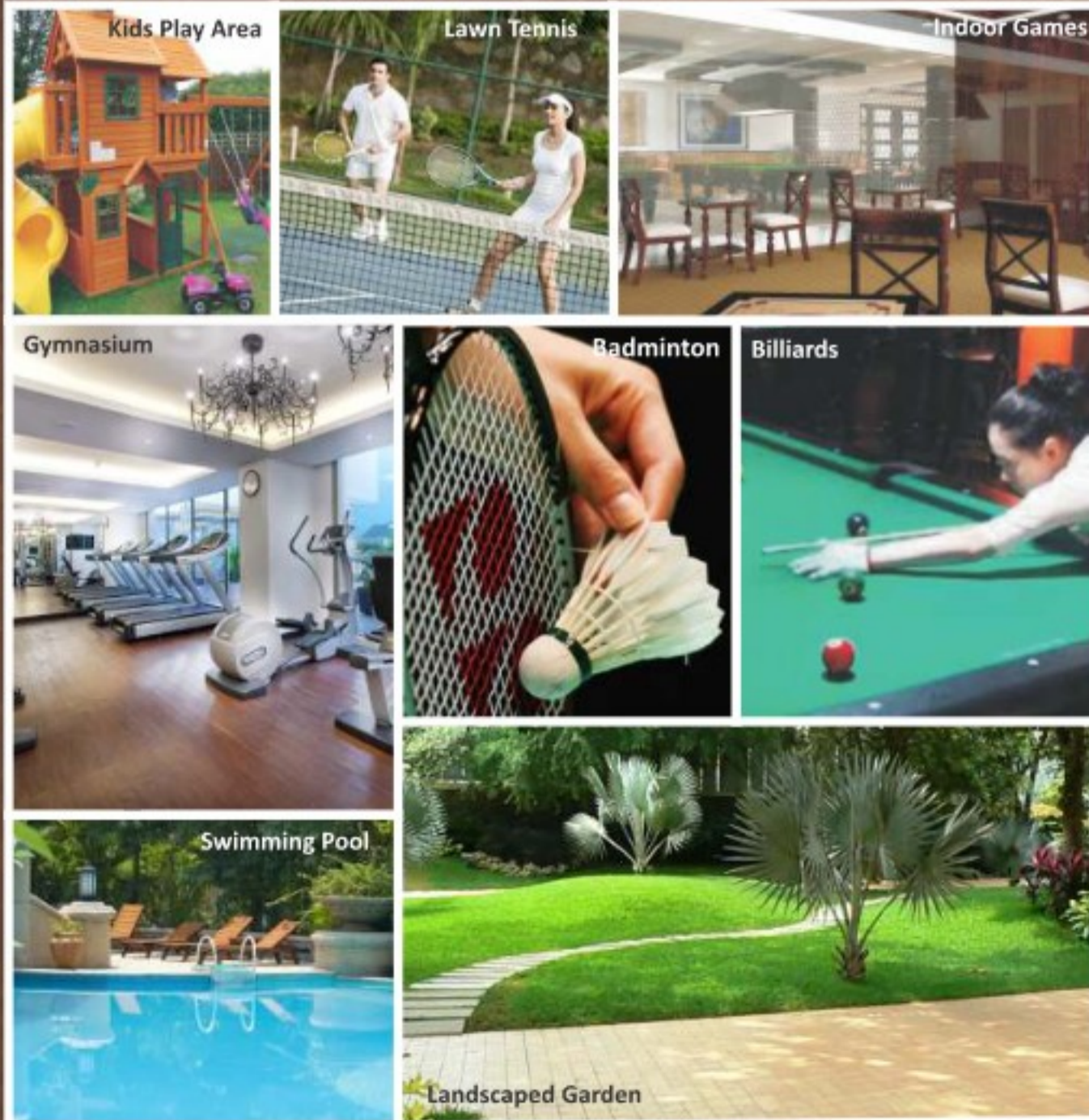


Bungalow Type - B

West Facing : 165 sq.yds. (27x55) | Built-up Area : 3100 sq.ft.



Amenities



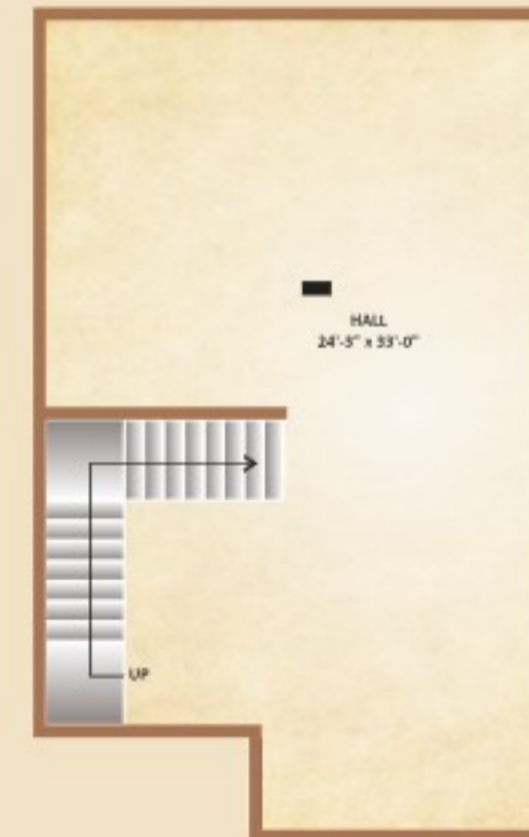
Specifications

- VILLA FEATURES**
- Vitrified tiles by **Kajaria/Orient**
 - POP finish on wall & ceiling with decorative cornices & beading
 - Premium quality acrylic distemper paint on walls & ceiling by **Asian Paints**
 - Satin finish paint on doors & windows
 - Sturdy stone door/window frames
- WOOD WORK**
- Wooden windows having glass panels
 - Tough water proof ISI mark 30 mm flush doors
 - Well designed laminated main door of 30 mm thickness
 - Designer fittings on doors & windows by **Dorset/IPSA**
- KITCHEN**
- Black granite working counters
 - Stainless steel sink
 - 2 feet tiles above the counter
 - Provision for geyser
 - Provision for aqua guard & modular kitchen
- TOILETS**
- Designer ceramic tiles of reputed make
 - Anti-skid ceramic tiles on floor
 - C.P. fittings & accessories of **Jaquar/Kohler**
 - Sanitary ware by **CERA/Hindware**
- ELECTRICAL**
- Modern electrical system with concealed copper wiring by **Anchor/Finolex**
 - Philips** make modular switches & accessories
 - TV/Telephone/A.C./Cooler points at appropriate places
 - Multi stage safety system

Floor Plan

Arcadia greens Luxury Bungalows...

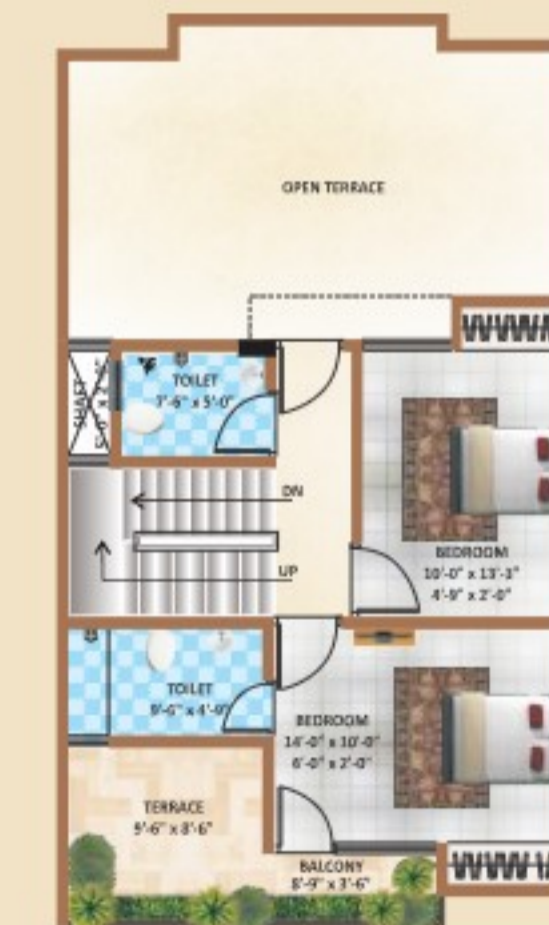
Basement Floor



Ground Floor



First Floor



Bungalow Type - C

West Facing : 139 sq.yds. (25x50) | Built-up Area : 2700 sq.ft.

