

**MAHIMA**  
Committed to Excellence



RERA Reg. No.: RAJ/P/2024/2973 | RERA Website: [www.rera.rajasthan.gov.in](http://www.rera.rajasthan.gov.in)



## Lifestyle creates you Choices create your class

3&4 BHK Platinum Class Apartments | Tonk Road, Jaipur

Welcome to Mahima Palm Springs. Experience the confluence of luxury and lifestyle in its finest way. Nestled in the heart of serene surroundings, Palm Springs illustrates a vibrant picture of a Platinum Class Living in its fine details.

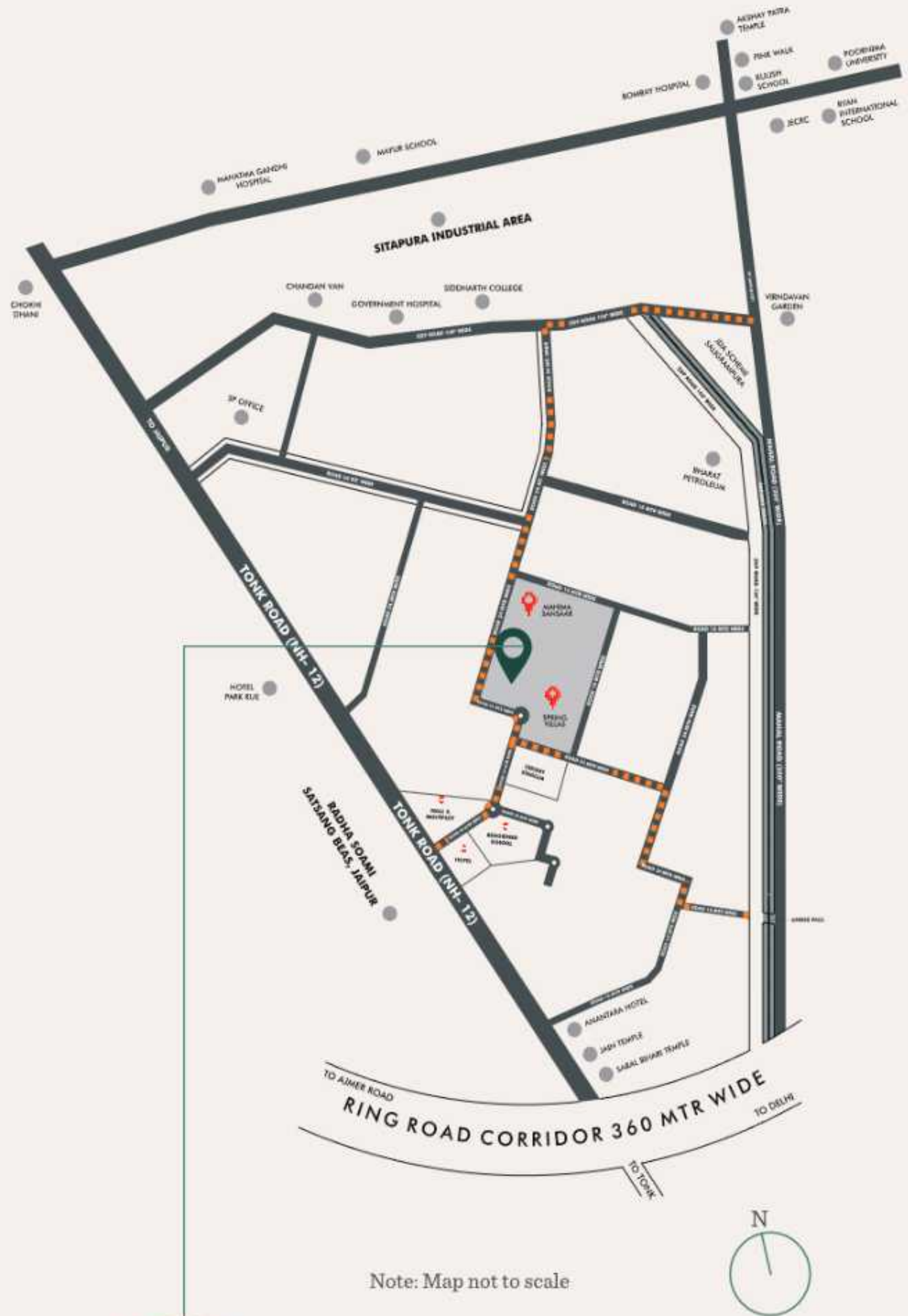
It's a world of elegance and sophistication, where every aspect of living is meticulously crafted to bring the idea of a luxury living to life. From spacious interiors to breathtaking views, each residence at Mahima Palm Springs exudes elegance and reinvents the existing notions of an extraordinary living.

## Key Distances

- Saral Bihari Temple - 2 Mins
- Chokhi Dhani - 4 Mins
- Educational Institutes - 5-7 Mins
- Hotel Crown Plaza - 7 Mins
- Bombay Hospital - 10 Mins
- Narayana Hrudayalaya Hospital - 10 Mins
- Mahatma Gandhi Hospital - 10 Mins
- Hotel Marriott - 15 Mins
- Entertainment Paradise - 15 Mins
- World Trade Park - 20 Mins
- Jaipur International Airport - 20 Mins
- Durgapura Railway Station - 20 Mins



Scan the QR Code for google location.



Note: Map not to scale



## Address creates identity Location defines your status

Mahima Palm Springs is strategically located on the thriving Tonk Road in Jaipur.

The location provides easy access to all essential amenities and services. Palm

Springs is a part of a well-connected neighbourhood that offers a seamless connectivity to all important destinations throughout the city. Facilities like world-class school, shopping complex, upcoming hospital, and mall are situated within the project, making it a practical and desirable place to live. What's more, enjoy a world of your own while being a part of everything that matters.



## Welcome to Platinum Class Living

---

In a world where lifestyle exceeds the confines of prosaic everyday life, Palm Springs brings freshness to the impression of an evolved life and derives new values of an inspiring living. Call it a Platinum Class Living with an edge over everyone else.



## EXPANSIVE LIVING



### Spacious Apartments

where life discovers unmatched comfort

Space is the biggest enabler of the present-day progressive world. Mahima Palm Springs portrays space as a lifestyle amenity and offers a comfortable and defined living experience. With generously sized rooms and expansive layouts, these residences provide ample space for relaxation and realisation of a wonderful lifestyle. Enjoy the freedom and personalize your home while relishing the beauty of a marvelous articulation called life.



The architecture of Palm Springs combines modern aesthetics with timeless elegance. Every apartment in the project reflects thoughtful planning where each minute detail has been taken into consideration.

Clean lines and open spaces create a sense of freedom, while large windows allow natural light to enhance interiors. Premium specifications and high quality finishes ensure durability and sophistication, making the residences both stylish and functional.





---

## OPEN TO SERENITY

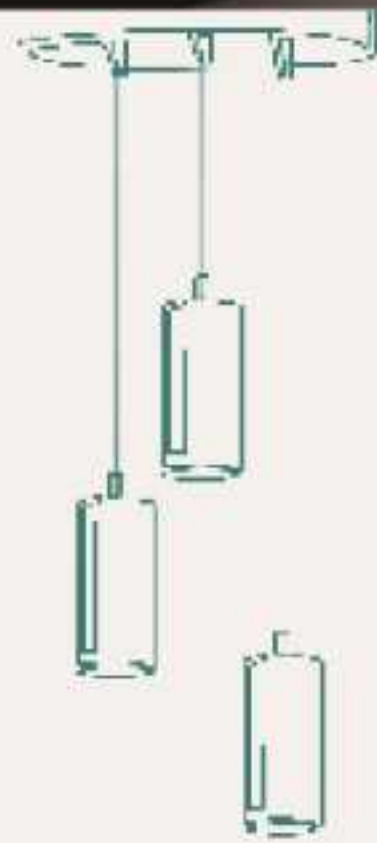
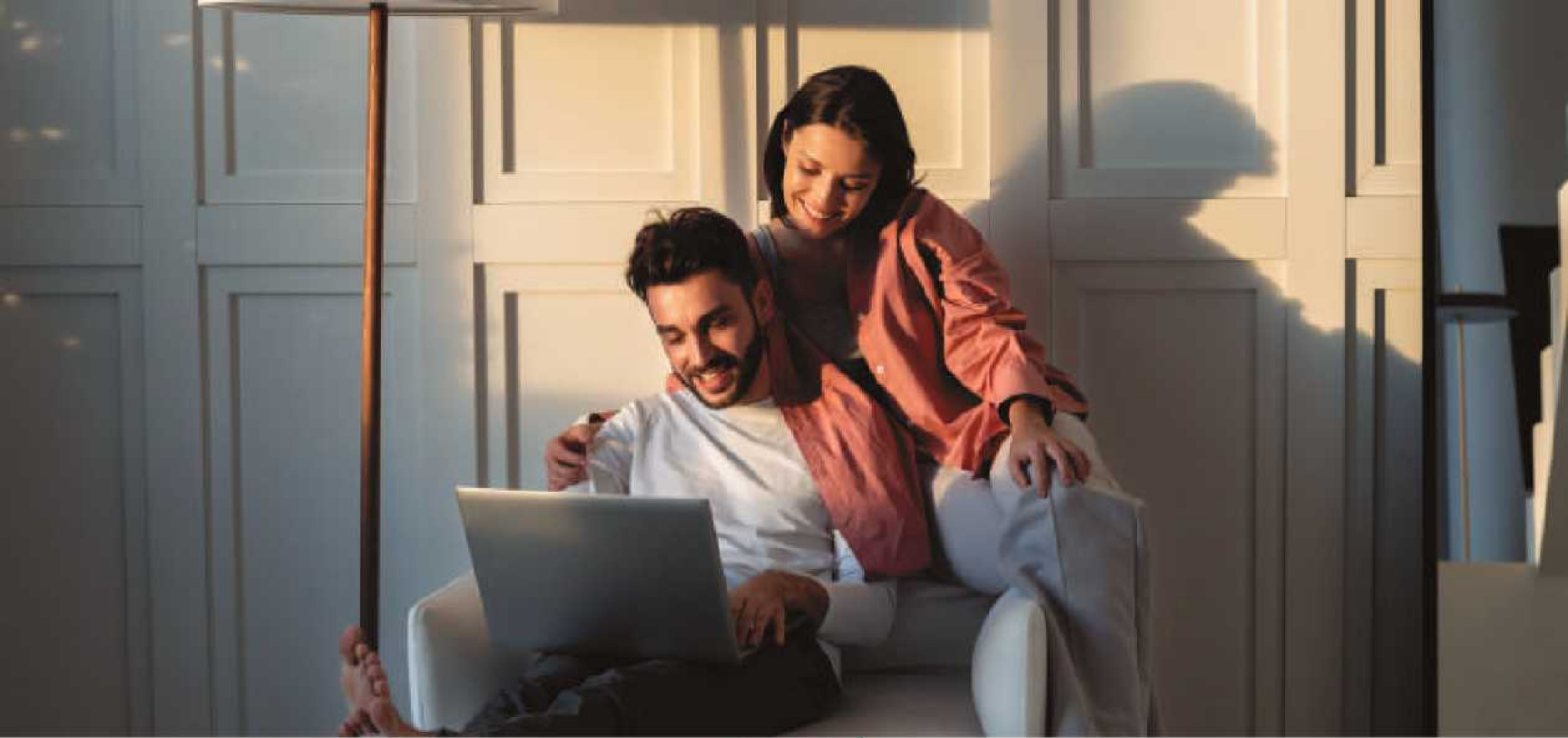


### 2&3 Side Open Apartments

Where light plays and air whispers

---

The 2&3 side open apartments at Palm Springs offer a refreshing living experience with fresh air and ample sunlight. Each residence at the Palm Springs creates beautiful views from multiple angles, creating a bright and inviting atmosphere. Enjoy a sense of openness and connection in thoughtfully designed homes at Palm Springs.



## A SYMPHONY OF SPACE



### Only 3 Apartments per floor Where idea of luxury living elevates

With only three apartments per floor at Palm Springs, enjoy an exceptional level of privacy and exclusivity.

This intimate setup offers a serene living experience with minimal noise and traffic.

Each residence is designed to provide a peaceful retreat, letting you relish the tranquility of surroundings without compromising on almost anything.



Podium Day View



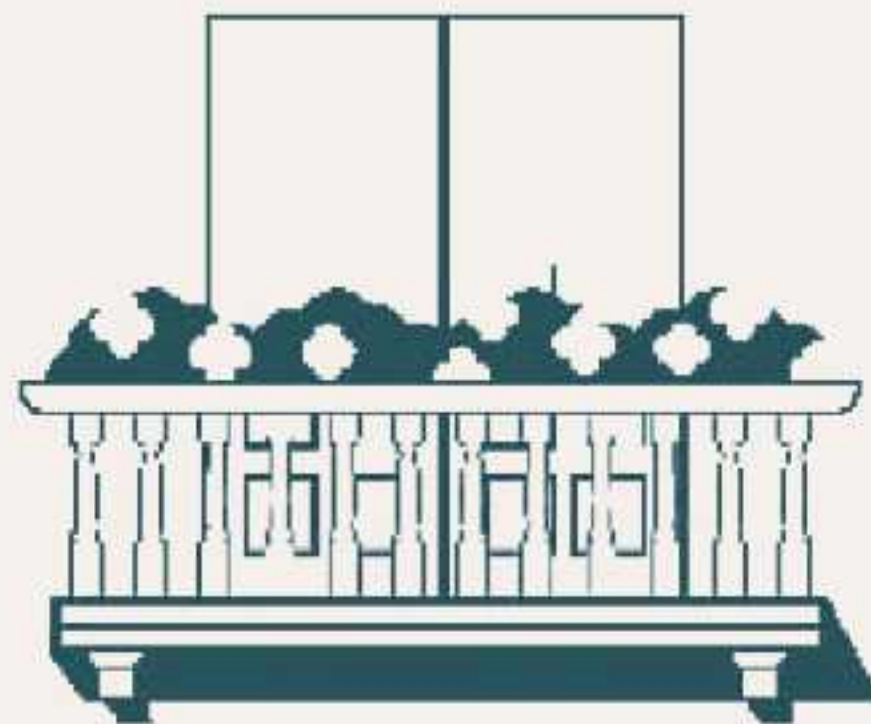
Podium Night View



## A podium full of indulgences

---

Take a stroll along the meticulously designed pathways, relax on inviting benches, or simply enjoy the placid environs. For that peaceful moment of reflection and a refreshing break, the podium garden at Palm Springs provides an obvious and natural escape.



## YOUR WINDOW TO THE NATURE



### Real Big Balconies

Where sunrise & sunset paint the sky

The real big balconies at Palm Springs offer a luxurious outdoor experience with ample space for relaxation and reflection.

Enjoy mesmerizing sunsets and sunrises while unwinding in a private and cosy settings.

More than just balconies, it's about absorbing the essence of moments and creating lasting memories of a lifetime.



## Where platinum class Meets comfort

---



Welcome to Club Five Senses, where luxury meets an upper crust milieu.

Revel in a range of premium amenities and exceptional service designed to elevate your mood and moments.

Give your lounging a class and connect to the tribe you belong to.

Club Five Senses caters to the need of all age groups and helps them find their spirit back by redefining the perspective to enjoy the finer things in life.



Mini Theatre



Table Tennis



Gym



Banquet Hall



Outdoor Pool

## Rajasthan's Biggest & Fully Operational Clubhouse

---

50,000 Sq. Ft. spread across five zones



Yoga Room



Reception



Welcome Zone



Library



Cafeteria View



Kids Play Area



Kids Zone



Indoor Badminton Court



Indoor Pool



Actual Picture of Club Five Senses

# Clubhouse Plans

## Lower Ground Floor Zones



### Legend

**Kids Zone** 1. Games room 2. Music/Dance room 3. Interactive room

**Welcome Zone** 4. Reception 5. Guest rooms

**Covered Celebration Zone** 6. Waiting area 7. Banquet 8. Cards room 9. Mini theatre

**Sports Zone** 10. Squash court 11. Badminton court

**Health Zone** 12. Kids/Indoor pool 13. Deck 14. Spa 15. Outdoor pool

**Others** 16. Restaurant 17. Amphitheatre 18. Celebration square



# Clubhouse Plans

## Ground Floor Zones



### Legend

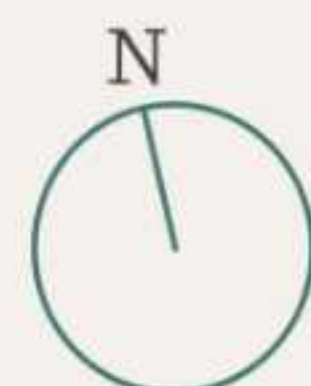
**Kids Zone** 1. Jungle theme - Kids area 2. Snooze room 3. Dramatic area

**Welcome Zone** 4. Reading lounge

**Covered Celebration Zone** 5. Multi-purpose hall 6. Kitchen

**Sports Zone** 7. Table tennis room 8. Snooker table 9. Pool table

**Health Zone** 10. Waiting area 11. Gymnasium 12. Yoga room







Cricket Ground



Table Tennis



Tennis Court



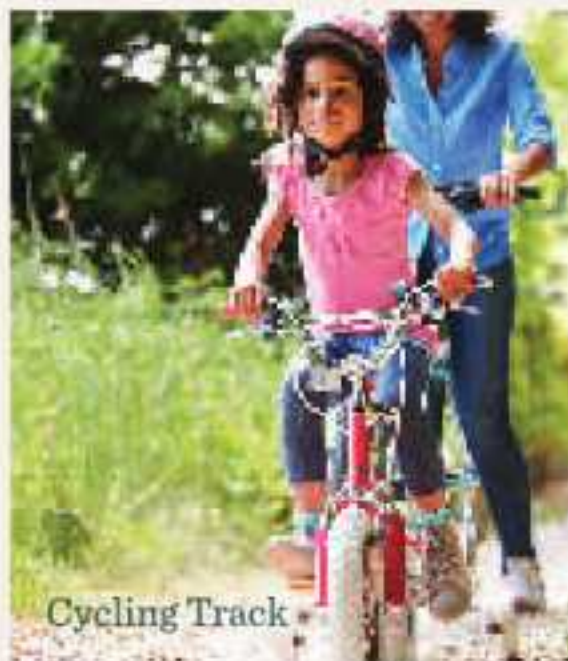
Badminton Court



Rock Climbing



Football Ground



Cycling Track



Jogging Track



Outdoor Gym



Swimming Pool

## The sports edition luxurious life

Get ready to play life on front foot

Palm Springs houses a variety of sports facilities. Each sport here perfectly offers an opportunity to give the routine a break and celebrate the meaning of a happening life. Besides just sports, it's about saying hello to life with all ecstasy and enthusiasm. Go choose your game and win every moment of life.





---

## MAKING SUSTAINABILITY WORK FOR TOMORROW



### Live the promise of a thriving & responsible future

---

Mahima Palm Springs puts sustainability first. The project proudly implements revolutionary Bhungroo technology for water management and EV charging points for environment conservation. Bhungroo technology collects rainwater underground and makes it available when required. Water collected in Bhungroo technology allows residents to use it when the demand is high. EV charging points put the idea of sustainable energy at work. Choose a responsible lifestyle and make the idea of sustainable life a living reality.



# Master Plan





# Master Plan



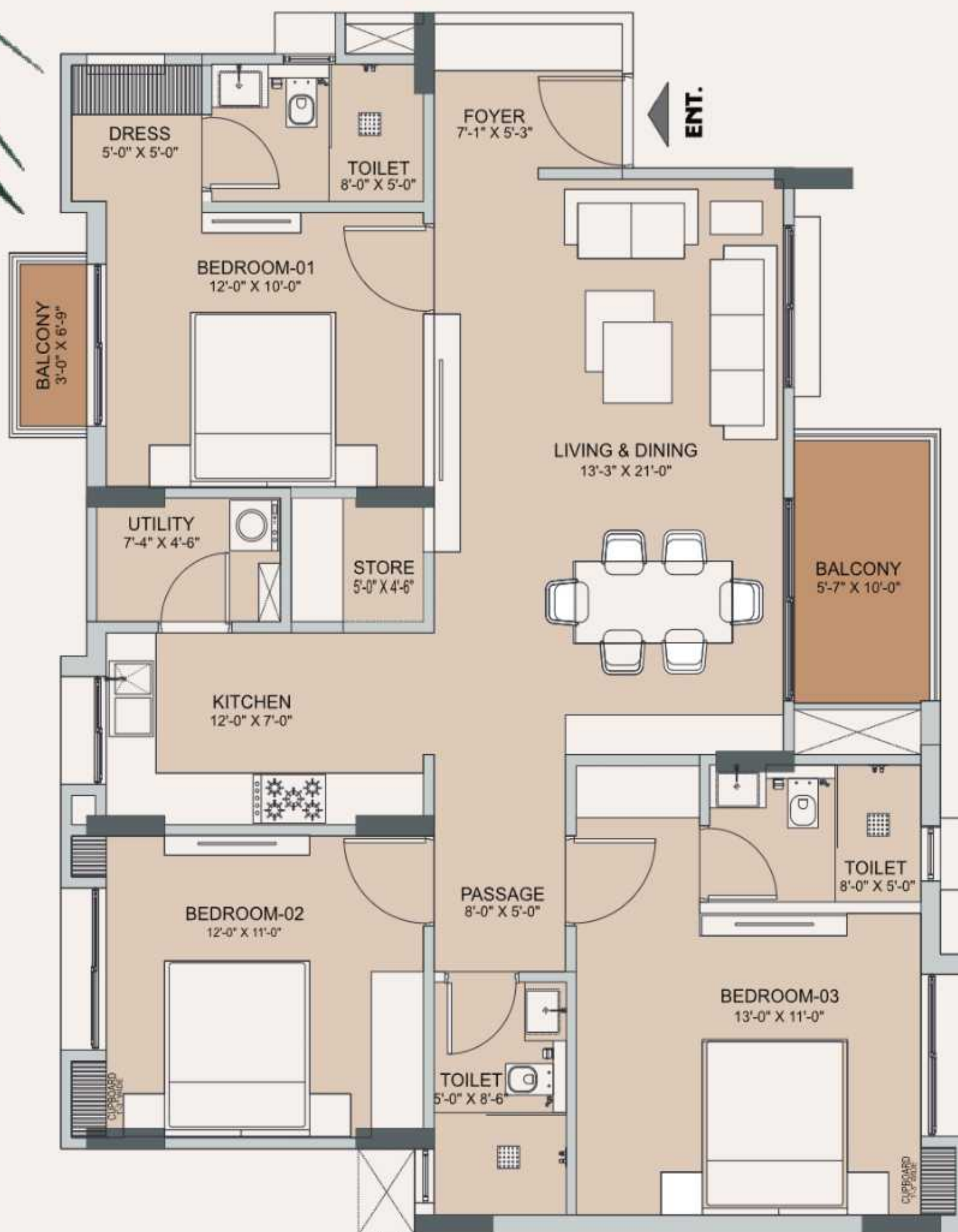
Area Table

	TYPE	CARPET (Sq. Ft.)	Balcony (Sq. Ft.)	B.U.A (Sq. Ft.)	S.B.U.A (Sq. Ft.)
	3BHK Small -Type 1	1090.13	106.41	1332.89	1705.96
	3BHK Small -Type 2	1101.23	106.41	1345.16	1721.81
	3BHK Large -Type 1	1272.72	118.83	1548.49	1982.07
	3BHK Large -Type 2	1273.26	120.44	1542.57	1974.49



Area Table

	TYPE	CARPET (Sq. Ft.)	Balcony (Sq. Ft.)	B.U.A (Sq. Ft.)	S.B.U.A (Sq. Ft.)
	3BHK + Study -Type 1	1340.97	148.43	1662.27	2127.70
	3BHK + Study -Type 2	1340.97	148.43	1662.27	2127.70
	4BHK + Study -Type 1	1612.11	254.63	2043.19	2615.28
	4BHK + Study -Type 2	1631.40	236.97	2046.15	2619.07

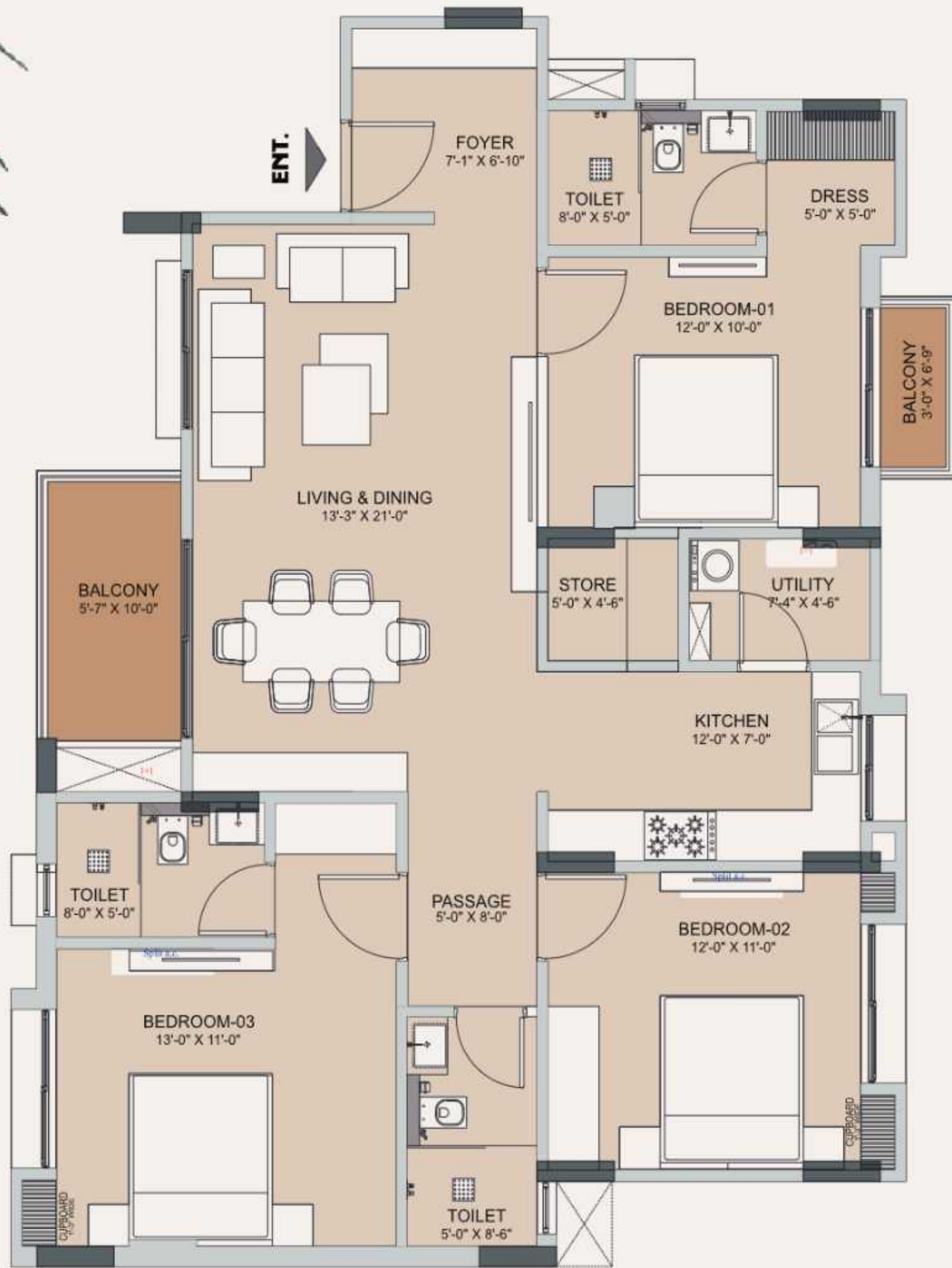


Key plan

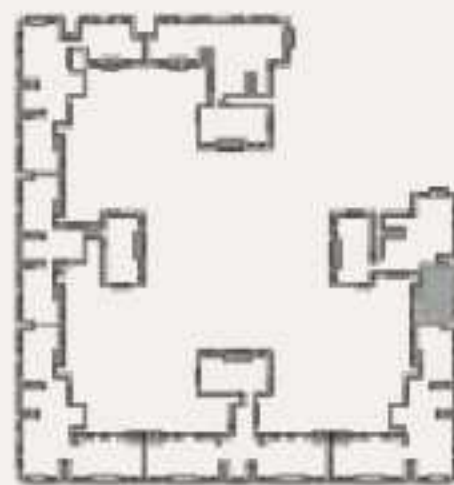


### Unit Plan- 3BHK Small Type 1

Carpet Area: 1090.13 Sq. Ft. | Balcony: 106.41 Sq. Ft. | B.U.A: 1332.89 Sq. Ft. | S.B.U.A: 1705.96 Sq. Ft.



Key plan

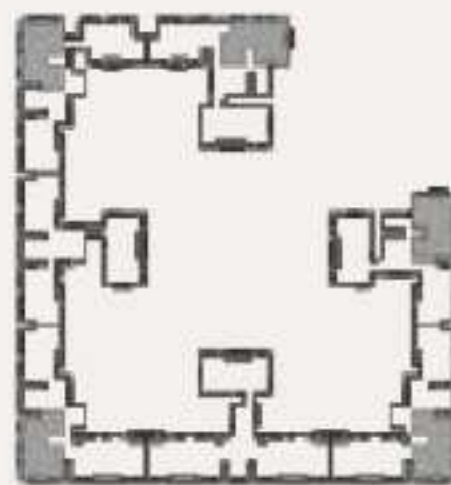


## Unit Plan- 3BHK Small Type 2

Carpet Area: 1101.23 Sq. Ft. | Balcony: 106.41 Sq. Ft. | B.U.A: 1345.16 Sq. Ft. | S.B.U.A: 1721.81 Sq. Ft.



Key plan

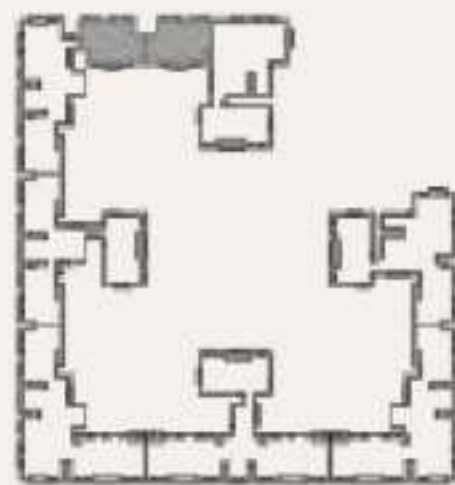


## Unit Plan- 3BHK Large Type 1

Carpet Area: 1272.72 Sq. Ft. | Balcony: 118.83 Sq. Ft. | B.U.A: 1548.49 Sq. Ft. | S.B.U.A: 1982.07 Sq. Ft.

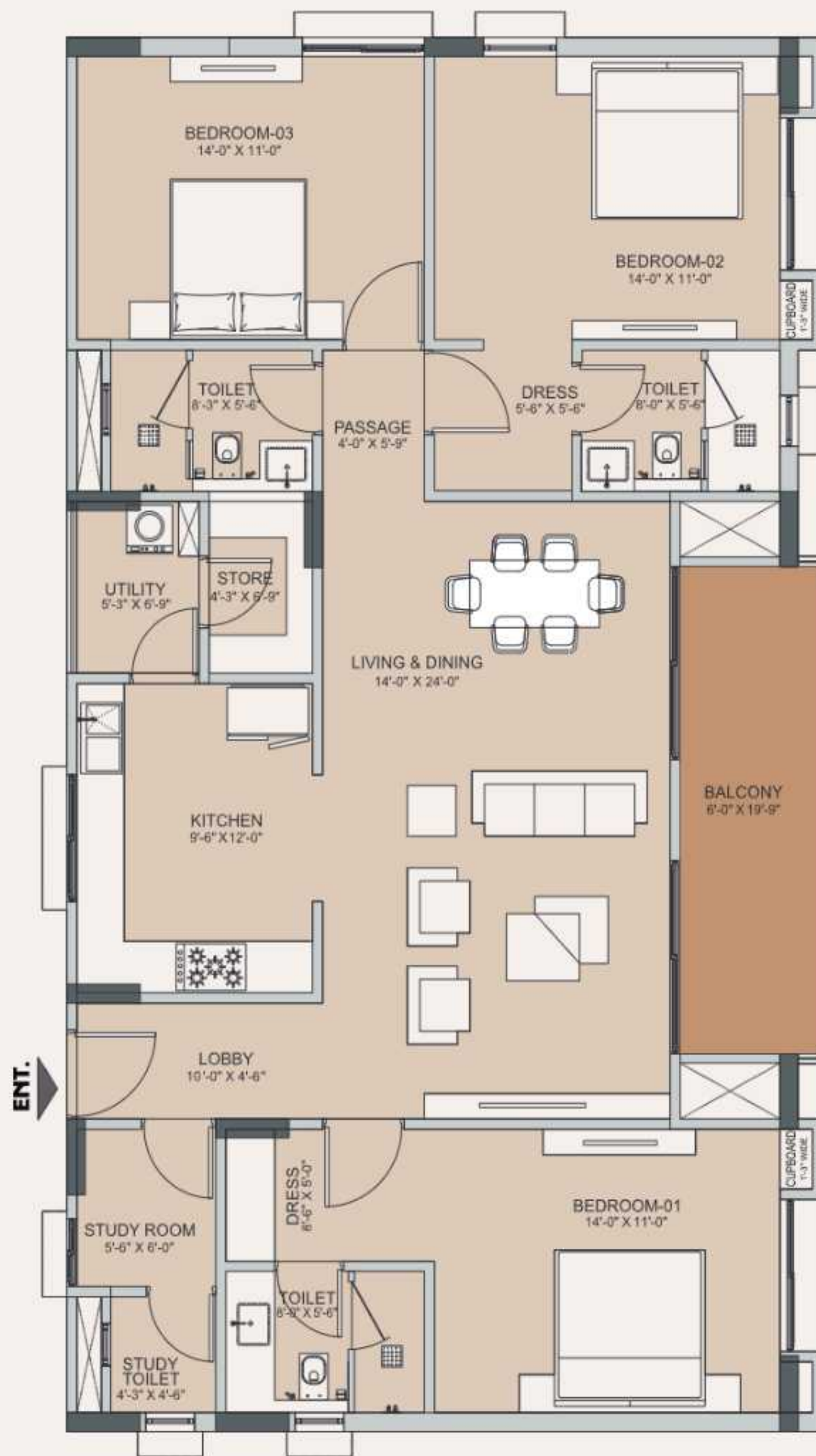


Key plan



## Unit Plan- 3BHK Large Type 2

Carpet Area: 1273.26 Sq. Ft. | Balcony: 120.44 Sq. Ft. | B.U.A: 1542.57 Sq. Ft. | S.B.U.A: 1974.49 Sq. Ft.

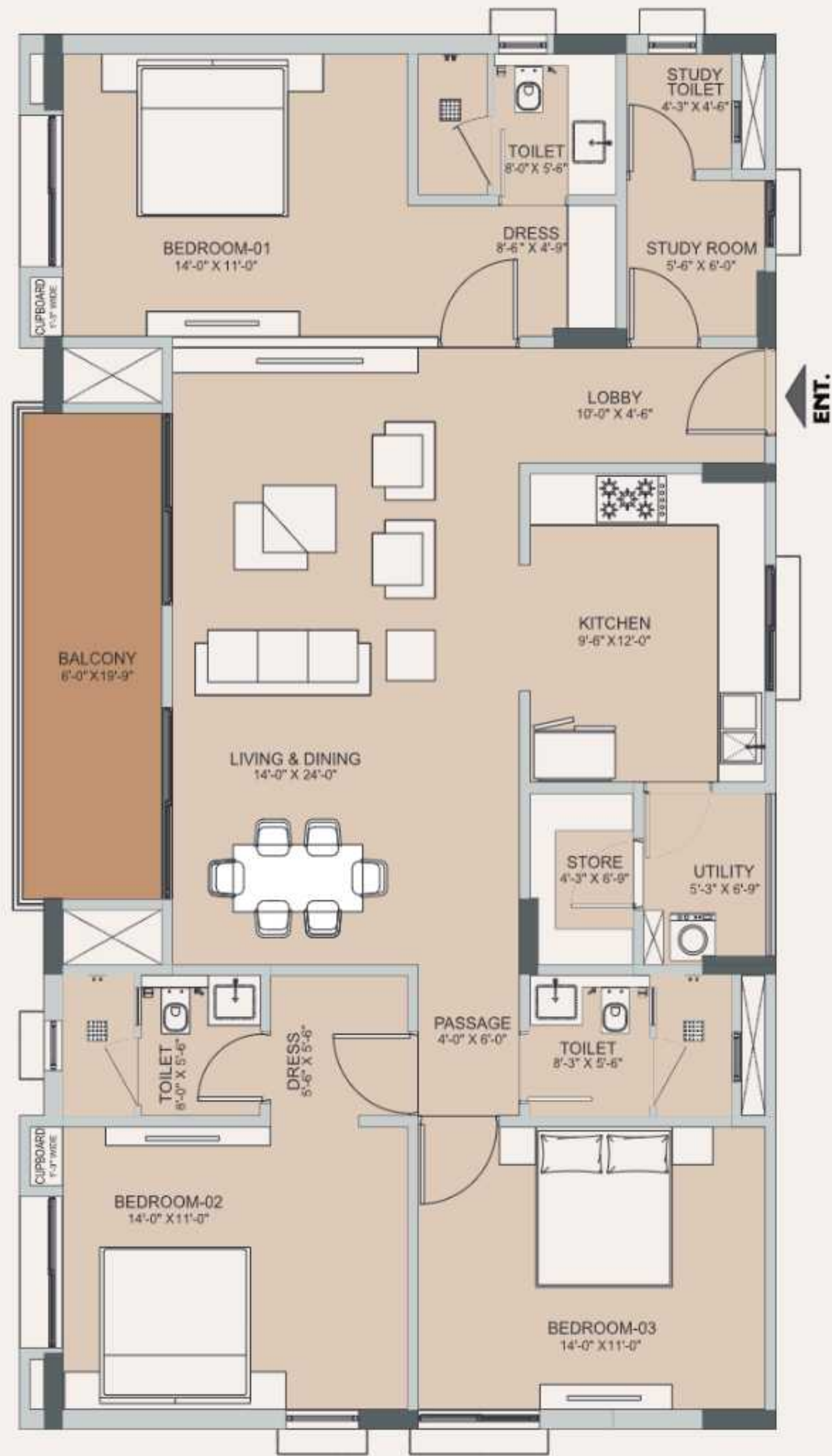


Key plan



## Unit Plan- 3BHK + Study Type 1

Carpet Area: 1340.99 Sq. Ft. | Balcony: 148.43 Sq. Ft. | B.U.A: 1662.27 Sq. Ft. | S.B.U.A: 2127.70 Sq. Ft.

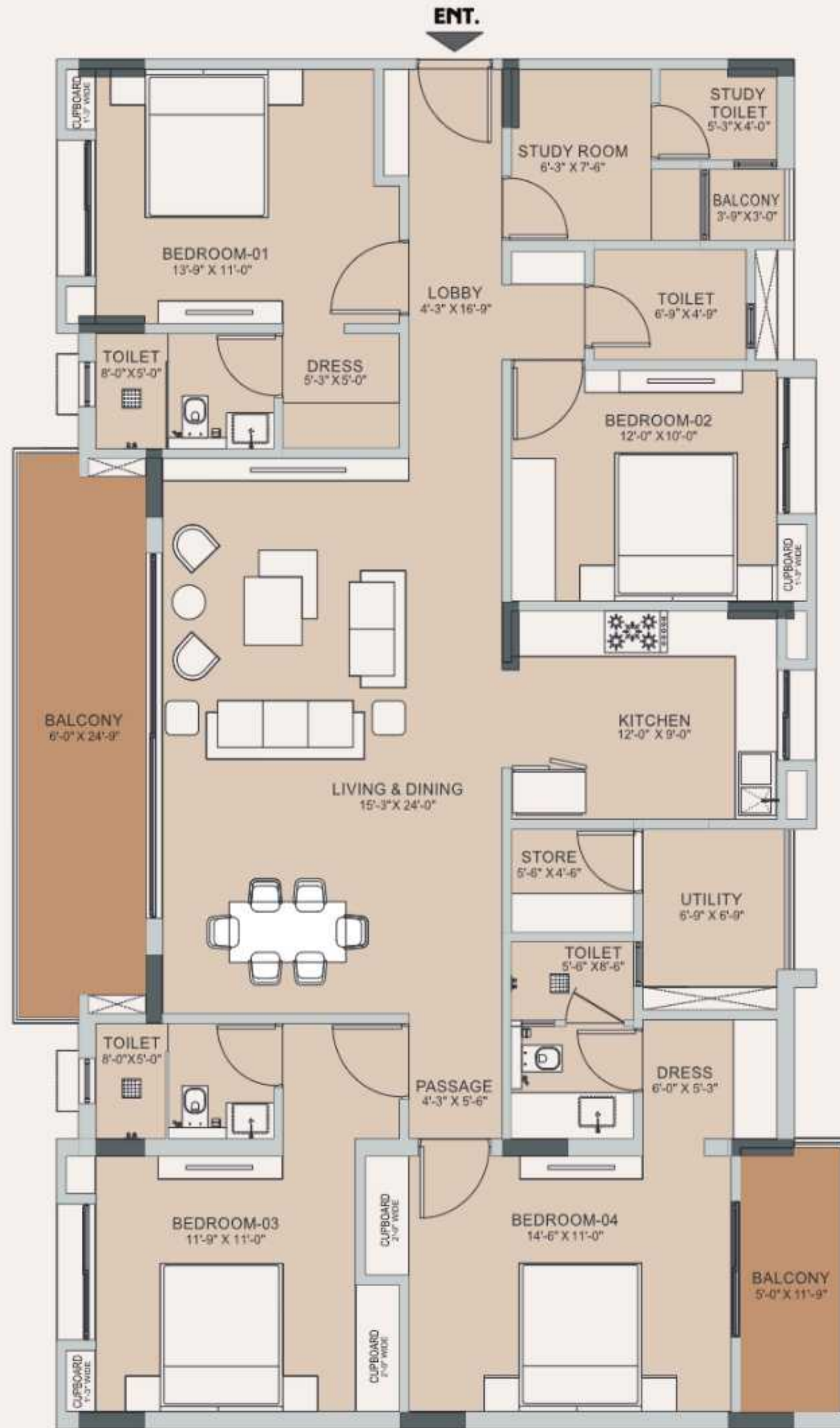


Key plan



## Unit Plan- 3BHK + Study Type 2

Carpet Area: 1340.99 Sq. Ft. | Balcony: 148.43 Sq. Ft. | B.U.A: 1662.27 Sq. Ft. | S.B.U.A: 2127.70 Sq. Ft.



Key plan

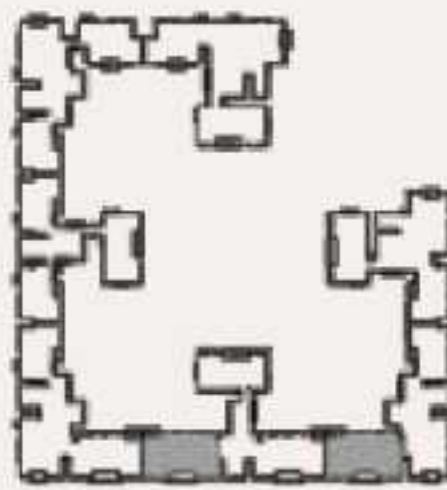


## Unit Plan- 4BHK + Study Type 1

Carpet Area: 1612.11 Sq. Ft. | Balcony: 254.63 Sq. Ft. | B.U.A: 2043.19 Sq. Ft. | S.B.U.A: 2615.28 Sq. Ft.



Key plan



## Unit Plan- 4BHK + Study Type 2

Carpet Area: 1631.40 Sq. Ft. | Balcony: 236.97 Sq. Ft. | B.U.A: 2046.15 Sq. Ft. | S.B.U.A: 2619.07 Sq. Ft.



# Project Specifications

## Living/Dining

---

Flooring	Vitrified tiles of 600 x 1200
Skirting	Vitrified tile profile
Wall Finishes	Plaster and O.B.D.
Ceiling	Plaster and O.B.D. and cove false ceiling

## Master Bedroom

---

Flooring	Wooden texture vitrified tiles 200X1200
Skirting	Wooden texture vitrified tile profile
Wall Finishes	Plaster and O.B.D.
Ceiling	Plaster and O.B.D.

## Other Bedrooms

---

Flooring	Vitrified tiles of 600 x 1200
Skirting	Vitrified tile profile
Wall Finishes	Plaster and O.B.D.
Ceiling	Plaster and O.B.D.

## Kitchen

---

Flooring	Vitrified tiles of 600 x 1200
Skirting	Vitrified tile profile
Wall Finishes	Plaster and O.B.D.
Wall Tiles	Tiles up to 2 feet height above counter top 600X1200
Counter Top	Premium granite
Sink	Stainless steel sink with drain board
CP Fittings	Chrome finished sink mixer

## Structure and Services

---

Earthquake resistant structure  
OH water tank for potable water & separate  
OH water tank for flushing water (Treated)  
Energy efficient, green eco friendly nominal design,  
Centralized grouped location of services installation to ensure easy maintenance,  
State-of-the-art technology, fast track installation and compliance to all statutory regulations

## Electricals

---

High side electrical equipment- Transformer, panels etc of requisite designed capacity  
Electrical fittings & concealed copper wiring in PVC conduit  
Separate meter for lighting in common areas, elevators and pumps  
16 AMPS sockets for geysers in toilets  
25 AMPS socket for air conditioners in all bedrooms  
Adequate nos. of 6 AMPS sockets & 16 AMPS sockets in kitchen  
Adequate 16 amps plug sockets in each room  
Multiple socket in living room for connections to TV, stereo and other equipments  
One calling bell along with bell push  
Copper piping for AC in each flat



# Project Specifications

## Toilets

Flooring	Anti skid vitrified tiles of 600 x 1200
Wall Finishes	Ceramic tiles up to 8 feet height & rest plaster & O.B.D.
CP Fittings & Sanitary Fittings	European wall hung WC, under/over counter basin of renowned brands like Kohler/Jaquar/Roca or equivalent, brush steel C.P. fixtures of renowned brands like Kohler/Jaquar/Roca or equivalent
Hygiene	Separate dry and wet areas

## Balcony

---

Flooring	Wooden texture vitrified tiles 200X1200
Skirting	Wooden texture vitrified tile profile
Hand Rail	Glass railing

## Doors and Windows

---

Main Door	Flush door with laminate on both sides
Other Doors	Flush door with laminate on both sides
Windows	Aluminium powder coated
Ventilators	Aluminium powder coated

## Common Lobby

---

Flooring	Anti skid premium class tiles/natural stone
Skirting	Tile/marble profile
Wall Finishes	Plaster and O.B.D.
Ceiling	Plaster and O.B.D.

## Staircase

---

Riser and Tread	Natural stone/tiles
Hand Rail	M.S. railing with enamel paint satin finish

## Common Facilities

---

### Services

1. Power back up for common services
2. Power back up of 1 kW for 3 BHK and 1.5 kW for 4 BHK
3. Gas bank
4. Garbage collection point
5. Wi-Fi club building
6. Provision for DTH
7. CCTV at entrance
8. Elevators
9. Rainwater harvesting system
10. Sewage treatment plant
11. EV charging point at stilt floor



## The Makers

# MAHIMA

Committed to Excellence

For over three decades, Mahima Group has stood as the leading real estate developer in Rajasthan, leaving an indelible mark across various facets of infrastructural development. With a legacy spanning 34 years, we have successfully delivered 10 million sq. ft. of excellence.

Our commitment to timeless quality is evident in the completion and delivery of iconic commercial complexes, now recognized as city landmarks. Catering to a diverse audience, our focus extends to those seeking real estate investments and individuals in search of villas or flats for residential purposes. While we dominate the luxury living sector, our dedication to providing refined living at affordable prices sets us apart.

Boasting a motivated team of 300+ professionals, our collective agenda is to elevate the firm to greater heights. We take pride in winning the satisfaction of over 4400+ families across 35 completed projects, making us a trusted name in the industry. Mahima Group's unique position is further underscored by collaborations with 100+ national and international brands in our malls.

As we continue to grow, our commitment to expansion remains unwavering, propelled by a vision of sustained progress and excellence in the real estate market.

---

### Completed Projects (Residential)

#### Elite

New Sanganer Road, Jaipur

#### Panorama

Jagatpura, Jaipur

#### Panache

Jagatpura, Jaipur

#### Uday

Jagatpura, Jaipur

#### Desire

Ajmer Road, Jaipur

#### Nirvana (Phase-I& II)

Ajmer Road, Jaipur

#### Kopal (Villas)

Jagatpura, Jaipur

#### Sansaar

Near Chokhi Dhani, Tonk Road, Jaipur

#### Fountain Square

Jawahar Circle, Jaipur

#### Iris

New Sanganer Road, Jaipur

#### City Ville (Villas)

Jagatpura, Jaipur

#### Florenza

Patrakar Colony, Mansarovar Ext., Jaipur

#### Elanza

Patrakar Colony, Mansarovar Ext., Jaipur

#### Studio Panache

Jagatpura, Jaipur

#### Bellevista

Jagatpura, Jaipur

---

### Completed Projects (Commercial)

#### Crystal Palm

C-scheme, Jaipur

#### Crystal Mall

Bani Park, Jaipur

#### Warehouse

Ajmer Road, Jaipur

#### Crystal Court

Malviya Nagar, Jaipur

#### Triniti

New Sanganer Road, Jaipur



## On-going Projects (Residential)

### Mansion Royale

Opp. International Airport, Jaipur (Terminal-2)

### Shubh Nilay

Opp. DPS, 2 Mins. From Ajmer Road, Jaipur

### Spring Villas

Near Chokhi Dhani, Tonk Road, Jaipur

### Windchimes (Managed Farm Mansions)

Bad Ke Balaji Mode, Ajmer Road, Jaipur

### Shubh Nilay (Villas)

Opp. DPS, 2 Mins. From Ajmer Road, Jaipur

### Palm Springs

Near Chokhi Dhani, Tonk Road, Jaipur

## On-going Projects (Commercial)

### Magnus

Opp. Sunshine Honda, Tonk Road, Jaipur

### Primus

Near International Airport, Jaipur (Terminal-2)

# Complete Rental and Resale Solutions



Mahima Advisory Services offers a spectrum of rental properties at attractive price points. For every need, the Mahima Advisory Services provides plenty of options. Each option gives a right mix of amenities and makes paper work simple. Be it semi furnished, fully furnished, short term rental or long term rental, Mahima Advisory Services has the perfect options to suit every budget and choice.

Mahima Advisory Services will help you find



Packers & Movers



Nearby Schools



Nearby Hospitals



Nearby Shopping Mall



Utility Service Providers



Domestic Help Service Providers



# Caring Hands of Mahima Group

**finetech**

improving lives In-house Maintenance & Facility Management Company

Mahima Group believes and works to achieve the single line philosophy that says  
“nothing stands stronger for a lifetime than trust”.

Team Mahima relentlessly works to deliver complete peace of mind to its valued customers even after the sale is completed. To take care of the property and ensure security of residents, Finetech Facilities Management works round the clock under the able supervision of Mr. Nikhil Madan. It is about delivering 360 degree facility and management services to the residents of all Mahima projects. Core work areas of the company include common services, sanitation, cleanliness and security.

13

Years continuously  
in services

110+

In-house  
trained staff

380+

Highly professional  
contractors

46

Lacs sq. ft. residential projects  
under maintenance

5.3

Lacs sq. ft. commercial malls  
under maintenance

4400+

happy families  
satisfied with the service





Mahima Real Estate Pvt. Ltd.  
Corp. Off.: 4th Floor, Crystal Palm, 22 Godam Circle,  
Sardar Patel Marg, Jaipur - 302001

[marketing@mahimagroup.com](mailto:marketing@mahimagroup.com) | [www.mahimagroup.com](http://www.mahimagroup.com)

Disclaimer: This video/brochure/advertisement is not a legal document. The content herein describes the conceptual plan to convey the intent & purpose of the project. The relationship between the Promoter/Developer and the actual customers will be governed strictly by the agreements to be executed from time to time and not on the terms of this video/brochure/advertisement and or any other promotional document. Please refer to the template of Agreement for Sale (available on [www.rera.rajasthan.gov.in](http://www.rera.rajasthan.gov.in)) or approach our sales representative available at 4th Floor, Crystal Palm, 22 Godam Circle, Sardar Patel Marg, Jaipur - 302001 to know about Promoter's/Developer's legal offering and its contractual obligations in respect of purchase of flats/villas/units in the Project.